

THE METROPOLITAN MUSEUM OF ART



3 0620 00365859 7

119.8

PO 1

1932<sup>3</sup>

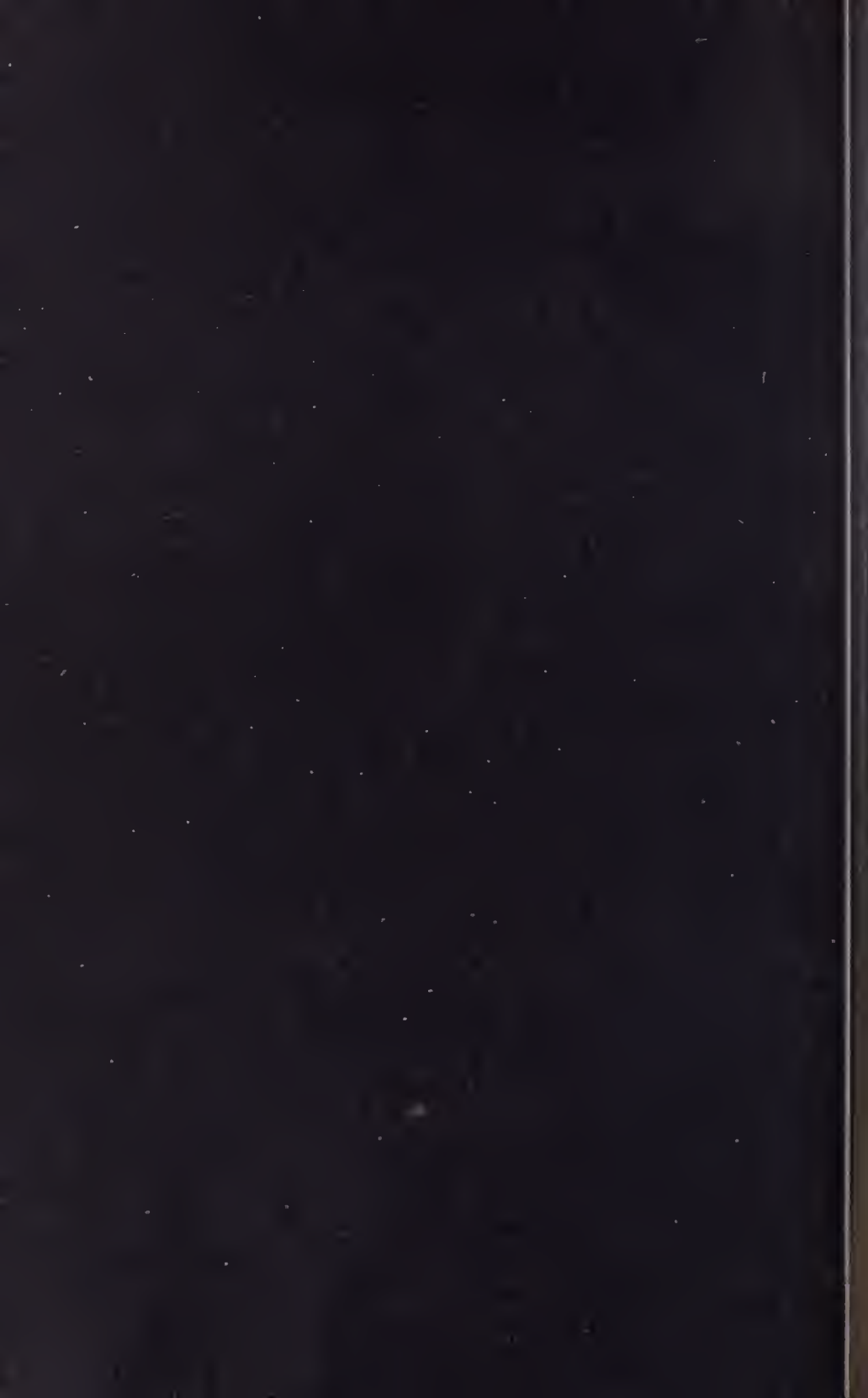
LIBRARY  
OF THE  
METROPOLITAN MUSEUM OF ART  
NEW YORK CITY.

PRESENTED BY  
American Art Association

No 72467

CASE SHELF





SALE NUMBER 3981

FREE PUBLIC EXHIBITION

From Friday, May 27, Until Time of Sale

Sunday and Memorial Day 2 to 5

Other days 9 to 6

UNRESTRICTED PUBLIC SALE

June 1, 2, and 3

at 2:15 p. m.

---

EXHIBITION & SALE AT THE  
AMERICAN ART ASSOCIATION  
ANDERSON GALLERIES • INC.

30 East 57th Street  
New York City



SALES CONDUCTED BY  
O. Bernet, H. H. Parke, A. N. Bade  
and H. E. Russell, Jr.

1932



# *Furniture and Decorations*

TAPESTRIES OF FLEMISH, AUBUSSON, AND OTHER WEAVES  
ORIENTAL RUGS ✓ PAINTINGS AND ENGRAVINGS  
LINENS ✓ LACES ✓ BROCADES ✓ VELVETS  
SILVER AND SHEFFIELD PLATE

## *Also an Entire Session of*

CHINESE PORCELAINS ✓ POTTERY ✓ MINERALS  
INCLUDING A VERY IMPORTANT IMPERIAL  
CH' IEN-LUNG CARVED WHITE JADE VASE  
ANTIQUE CHINESE RUGS ✓ FURNITURE

SOLD BY ORDER OF THE VARIOUS OWNERS

INCLUDING

ARMAND TOKATYAN  
NEW YORK CITY



AMERICAN ART ASSOCIATION  
ANDERSON GALLERIES • INC  
NEW YORK

1932

# *Priced Catalogues*

A PRICED COPY OF THIS CATALOGUE MAY  
BE OBTAINED FOR ONE DOLLAR FOR EACH  
SESSION OF THE SALE

• •

AMERICAN ART ASSOCIATION  
ANDERSON GALLERIES, INC.

*Designs its Catalogues  
and Directs All Details of Illustration  
Text and Typography*



## CONDITIONS OF SALE



All bids to be PER PIECE as numbered in the catalogue, unless otherwise mentioned.

The highest bidder to be the buyer. In all cases of disputed bids the lot shall be resold, but the auctioneer will use his judgment as to the good faith of all claims, and his decision shall be final.

Any bid which is not commensurate with the value of the article offered, or which is merely a nominal or fractional advance, may be rejected by the auctioneer if in his judgment such bid would be likely to affect the sale injuriously.

The name of the buyer of each lot shall be given immediately after the sale thereof, and when so required, each buyer shall sign a card giving the lot number, amount for which sold, and his or her name and address.

¶ A deposit at the actual time of the sale shall be made of all or such part of the purchase prices as may be required. ¶ If the two foregoing conditions are not complied with, the lot or lots so purchased may at the option of the auctioneer be put up again and resold.

Title passes upon the fall of the auctioneer's hammer, and thereafter the property is at the purchaser's risk, and neither the owner nor the Company is responsible for the loss of, or any damage to any article by theft, fire, breakage, however occasioned, or any other cause whatsoever.

Articles not paid for in full and not called for by the purchaser by noon of the day following that of the sale may be turned over by the Company to some carter to be carried to and stored in some warehouse until the time of the delivery therefrom to the purchaser, and the cost of such cartage and storage and any other charges will be charged against the purchaser, and the risk of loss or damage occasioned by such removal or storage will be upon the purchaser. ¶ In any instance where the bill has not been paid in full by noon of the day following that of the sale, the Company reserves the right, any other stipulation in these conditions of sale to the contrary notwithstanding, in respect to any or all lots included in the bill, at its option, either to cancel the sale thereof or to resell the same at public or private sale without further notice for the account of the buyer and to hold the buyer responsible for any deficiency sustained in so doing.

7 The Company exercises great care to catalogue every lot correctly and endeavors therein and also at the actual time of the sale to point out any error, defect, or imperfection, but guaranty is not made either by the owner or the Company of the correctness of the description, genuineness, authenticity or condition of any lot, and no sale will be set aside on account of any incorrectness, error of cataloguing or imperfection not noted or pointed out. Every lot is sold "as is" and without recourse.

8 Buying or bidding by the Company for responsible parties on orders transmitted to it by mail, telegraph, or telephone, if conditions permit, will be faithfully attended to without charge. Any purchases so made will be

- subject to the foregoing conditions of sale. Orders for execution by the Company should be given with such clearness as to leave no room for misunderstanding. Not only should the lot number be given, but also the name of the object, and a bid on several objects catalogued under a single number should be stated to be so much per piece unless the description contains the notation "[Lot.]", in which case the bid should be stated to be so much FOR THE LOT. If the one transmitting the order is unknown to the Company, a deposit must be sent or reference submitted. Shipping directions should also be given.
9. The Company will afford every facility for the employment of carriers and packers by the purchasers, but will not be responsible for any damage arising from the acts of such carriers and packers.

*These Conditions of Sale cannot be altered except by  
an Officer of the Company*

---

SALES CONDUCTED BY

O. BERNET / H. H. PARKE / A. N. BADE  
AND H. E. RUSSELL, JR.

AMERICAN ART ASSOCIATION  
ANDERSON GALLERIES, INC.  
30 EAST 57TH STREET  
NEW YORK CITY

TELEPHONE PLAZA 3-1269

CATALOGUES ON REQUEST

LONDON REPRESENTATIVE  
SHIRLEY FALCKE  
77 BROOK STREET, GROSVENOR SQUARE, W. 1.

## ORDER OF SALE

### FIRST SESSION

#### WEDNESDAY AFTERNOON, JUNE FIRST

Glass, Porcelains, and Pottery	1- 44
Paintings and Engravings	45- 80
Linens, Laces, Brocades, and Velvets	81- 99
Furniture and Decorations	100-162
Oriental Rugs	163-187
Furniture (Continued)	188-218
Oriental Rugs (Continued)	219-240

### SECOND SESSION

#### THURSDAY AFTERNOON, JUNE SECOND

Single-color and Decorated Porcelains and Pottery	241-346A
Semi-precious Minerals, Lamps, and Ivory Carvings	347-454
Antique Chinese Rugs	455-476
Chinese Furniture	477-502

### THIRD AND LAST SESSION

#### FRIDAY AFTERNOON, JUNE THIRD

Glass, Porcelains, and Pottery	503-548
Silver and Sheffield Plate	549-582
Furniture and Decorations	583-660
Paintings	665-666
Tapestries	668-673
Oriental Rugs	674-712



# FIRST SESSION

Wednesday, June 1, 1932, at 2:15 p.m.

*Catalogue Numbers 1 to 240 Inclusive*

---

## GLASS, PORCELAINS, AND POTTERY

### 1. FOUR SMALL EARLY AMERICAN GLASS OBJECTS

1- Small blue whisky flask, inkwell and pestle, spill holder, and  
liqueur bottle. [Lot.]

### 2. STAFFORDSHIRE TOBY PITCHER, AND FIGURINE

8- Blue-coated Toby and brown poodle. [Lot.] (*Private Owner*)  
*Heights, 11 and 8½ inches*

### 3. TWELVE DECORATED VENETIAN GLASS FINGER BOWLS AND STANDS

7- Star-shaped; simulating mother-of-pearl and enameled with  
flowers. [Lot.] *Diameter, 7 inches*

### 4. TWELVE STAFFORDSHIRE SEPIA PRINTED PLATES

2- Marine decoration. [Lot.] *Diameter, 9 inches*

### 5. THREE VARIOUS PORCELAIN ORNAMENTS

17- Dresden two-handled vase and a beaker. *XIX Century*  
*Vieux Paris vase.*  
[Lot.] *Heights, 8 inches*

### 5A. THREE ORNAMENTS

2- Blue and white octagonal porcelain rouge box; Ch'ien-lung  
Peking enamel bowl, imperfect; and a Dutch perfume bottle  
mounted in silver. [Lot.] (*Private Owner*)

### 6. LOT OF CUT AND ENGRAVED CRYSTAL TABLE GLASS

6- Comprising ten large goblets, a decanter, twelve sherry  
bumpers, two ale goblets, and a wine glass. [Lot.]

### 7. THIRTY-SIX SHIP-DECORATED GREEN GLASS TUMBLERS

700- *Catalonian Style*  
Comprising twenty-one large and fifteen small tumblers. (*Private Owner*)

- 6- 8. PAIR STAFFORDSHIRE POLYCHROME GROUPS  
 Figures of Highlanders with pet dogs, forming flower holders  
*Height, 12 inches.*
- 4- 9. TURNER DECORATED BLUE AND IVORY PITCHER  
*English, circa 1810*  
 Squat spherical faïence pitcher, decorated in raised ivory slip  
 with sporting dogs and grapevine. Base chipped.  
*Height, 7¼ inches.*
- 2- 10. THREE EARLY AMERICAN POTTERY JARS *XIX Century*  
 New England and Pennsylvania ware. Two slightly bulbous  
 jars, and a smaller covered jar. [Lot.]  
*Heights, 5½, 10, and 12 inches.*
- 8- 11. TWELVE ROYAL WORCESTER SEMI-EGGSHELL CHINA  
 SMALL TEACUPS AND ELEVEN SAUCERS  
 Decorated with small blue flowers on ivory white; interior  
 lemon yellow.
- 11- 12. TWELVE STAFFORDSHIRE BLUE PRINTED SERVICE PLATES  
 Decorated with one of R. Hall's select views, *Pains' Hill*  
*Surrey*, in deep blue. *Diameter, 10 inches.*
- 4- 13. TWO NANKING BLUE AND WHITE PORCELAIN PLATTERS  
*Circa 1800*  
 Octagonal, in willow pattern; one repaired.  
*Length, about 18 inches.*
- 12<sup>12</sup> 14. EIGHT ROYAL DOULTON PORCELAIN PLACE PLATES  
 Decorated in the Louis XVI taste in colors and gold. Fine  
 quality. *Diameter, 10¼ inches.*
- 5- 15. FIVE EARLY AMERICAN GLASS SMALL TUMBLERS  
 In amber, amethyst, and olive green glass; an interesting lot  
 [Lot.]

16. TWELVE VENETIAN GOLD-DECORATED GLASS TUMBLERS  
WITH CASE

In rose and blue tinted glass heavily encrusted with gold and enamel, in satin-lined case.

17. LOT OF CUT CRYSTAL TABLE GLASS

Comprising eleven large goblets, seventeen medium goblets, fourteen wine glasses, ten liqueur glasses, twelve punch cups.

18. PAIR OLD WATERFORD CUT GLASS SALTS  
AND TWO SMALL PLATES

The salts goblet-shaped, the plates in sunburst pattern with fine flat cutting. [Lot.]

19. LOT OF CUT AND ENGRAVED CRYSTAL TABLE GLASS

Comprising twelve finely paneled large goblets and one smaller, eleven punch cups, six finger bowls, eleven tumblers, and six molded finger bowls.

20. TWELVE ROYAL WORCESTER DECORATED PORCELAIN PLATES

Flower and trellis ornament in rose, turquoise, and orange.  
*Diameter, 9 inches*

21. TWELVE SANDWICH PRESSED CLEAR GLASS GOBLET

Bowls in thumb print or medallion pattern. *Height, 6 inches*

22. TURQUOISE GLAZED POTTERY DISH

Excellent piece of modeling in color; with teakwood stand.  
*Diameter, 14½ inches*

23. TWELVE MINTON ROSE AND WHITE PORCELAIN PLATES

Decorated with old Chelsea pattern. *Diameter, 9 inches*

24. EIGHT FRENCH FAÏENCE VASES

With floral and fruit decoration; assorted. Imperfect. [Lot.]  
(*Private Owner*)

25. FIFTEEN DOULTON CHINA PLACE PLATES

Decorated with large peonies and leaves in the Japanese taste, in red, gold, green, and ivory. *Diameter, 9 inches*

9-

26. ENGRAVED DEEP AMETHYST GLASS BOWL ON FOOT

Urn-shaped; finely engraved with foliage. *Diameter, 12½ inches*

9-

27. LOT OF RUBY, EMERALD, AND CLEAR WINE AND SPIRIT GOBLETs

Fifteen with plain ruby bowl, ten with engraved ruby bowls, nine with cut green bowls, sixteen with paneled ruby bowls. From the Derby family, Salem, Mass.

20-

28. TWO HISPANO-MORESQUE POTTERY PLAQUES *XVII Century*  
One in copper lustre, one in *changeant* brown lustre and painted in cobalt. *Diameters, 9 inches*

6-

29. SERVICE OF FRENCH PORCELAIN TEA AND COFFEE CUPS

*Circa 1820*

Comprising: six breakfast cups and eight saucers, bowl, deep dish, seven tea cups, thirteen demitasses, and ten saucers. Cracked and chipped. [Lot.] (*Private Owner*)

5-

30. VENETIAN GLASS SERVICE

Comprising: twenty-four sherries, fourteen cocktails, twelve champagnes, and two goblets; bowl etched with crest, on aquamarine blue spiraled stem. [Lot.] (*Private Owner*)

5-

31. CUT GLASS TABLE SERVICE

Comprising: bowl and two covered sweetmeat jars in the Waterford style, two compotiers and two tall covered jars, four candlesticks, four goblets, eleven sherries, and eight clarets. [Lot.] (*Private Owner*)

20-



32. ORIENTAL LOWESTOFT PORCELAIN PITCHER *Circa 1800*  
Syrup jug, handle and cover missing; decorated with the arms  
of New York enclosing a monogram. *Height, 11 inches*

33. LEEDS DECORATED QUEEN'S WARE PITCHER  
*English, circa 1810*  
Body encrusted with ground china fragments and painted, the  
neck painted brown and yellow; uncommon.  
*Height, 7¼ inches*

34. TWO DECORATED PITCHERS *English, Early XIX Century*  
Jackfield mirror-black pitcher decorated with yellow transfer;  
Staffordshire buff pitcher, modeled and pink-lusted with  
flowers. [Lot.] *Height, about 7 inches*

35. MINTON IVORY AND GOLD PORCELAIN TABLE SERVICE  
One hundred thirty pieces; some of the plates made for Colla-  
more of New York and slightly varying in detail. [Lot.]

36. TWELVE FRENCH RED AND GOLD PORCELAIN SOUP PLATES  
In the Empire taste. Good quality. *Diameter, 9½ inches*

37. TWELVE TIFFANY MINTON PORCELAIN PLACE PLATES  
Decorated with groups of flowers in *famille rose* colors on  
black. Fine quality. *Diameter, 10¼ inches*

38. TWO ANGLO-AMERICAN TRANSFER-PRINTED  
LIVERPOOL PITCHERS *Circa 1810*  
Decorated in black transfer with eulogies to Washington and  
John Adams, figures of Liberty, Justice and the arms of the  
United States. Repaired. *Heights, 9½ and 11 inches*

39. BLOWN CLEAR FLINT GLASS LAMP  
Globular bowl resting on tripod knopped stem; high cone-  
shaped foot with saucer base.

40. BLOWN CLEAR FLINT GLASS LAMP  
Similar to the preceding.

41. MINTON WHITE AND GOLD PORCELAIN DINNER SERVICE

Comprising: twenty-two dinner plates, fourteen soup plates, seventeen cereal plates, seventeen dessert plates, twenty-two compote plates, thirteen bread and butter plates, fourteen ramekins and eighteen plates, seven square dishes, seven round dishes, two demitasses and eighteen saucers, and twenty tea saucers; erected; in all 191 pieces. [Lot.] (*Private Owner*)

33<sup>50</sup>

42. BOOTH'S CHINA DINNER SERVICE

*Worcester Style*

Cream ware, with blue borders and floral decoration. Comprising: teapot, covered sugar bowl, three water pitchers, covered hot milk pitcher, coffee pot, two creamers, four small coffee pots, twelve egg cups, three sauce boats, four small teapots, eight small creamers, covered gravy bowl, eight salts, eight peppers, tea caddy, twelve coffee cups and twelve saucers, eighteen demitasses and eighteen saucers, a well-and-tree platter, three assorted platters, eighteen service plates, eighteen dinner plates, twenty-four entree plates, eight assorted vegetable dishes (two covers), cake plate, eighteen bread-and-butter plates, eighteen bouillon cups and saucers with twelve covers, eighteen tea cups and eighteen saucers, eighteen soup plates, twelve cereal plates with covers, twelve tea plates, two covered dishes. In all about 377 pieces. [Lot.] (*Private Owner*)

60-

43. BOOTH'S CHINA DINNER SERVICE

*Worcester Style*

Design of the preceding. Comprising: coffee pot, two creamers, two hot milk pitchers, three water pitchers, two sauce boats, four small coffee pots, five small teapots, eight small creamers, covered gravy boat, four salts, six peppers, twelve demitasses and twelve saucers, nine coffee cups and nine saucers, well-and-tree platter, three assorted platters, eighteen service plates, twelve dinner plates, twenty-four entree plates, eight assorted vegetable dishes (two covered), eighteen bread-and-butter plates, eighteen bouillon cups and eighteen saucers, eighteen soup plates, twelve cereal plates, twelve tea cups with handles and twelve saucers, two covered plates, five egg cups, four cereal plates and covers, twelve tea plates. In all about 289 pieces. [Lot.] (*Private Owner*)

60-

44. **BOOTHS CHINA DINNER SERVICE** *Worcester Style*  
 Design of the preceding. Comprising: coffee pot, two covered creamers, three water pitchers, three sauce boats, four small coffee pots, three small teapots, eight small creamers, gravy boat, four salts, eight peppers, twelve demitasses and twelve saucers, twelve coffee cups and twelve saucers, well-and-tree platter, three assorted platters, eighteen service plates, eighteen dinner plates, twenty-four entree plates, eight assorted vegetable dishes (two covered), cake plate, eighteen bread-and-butter plates, eighteen bouillon cups and eighteen saucers, twelve tea cups and twelve saucers, eighteen soup plates, twelve cereal plates, twelve tea plates, twelve tea cups without handles, two covered plates, teapot. In all about 302 pieces. [Lot.] (*Private Owner*)

### PAINTINGS AND ENGRAVINGS

45. **LOT OF COLORED ENGRAVINGS AND LITHOGRAPHS**  
 Comprising: seven fashion plates and four oval engravings, framed. [Lot.] (*Private Owner*)
46. **LINE ENGRAVING** *William E. Marshall*  
 Bust; three-quarters to right, in oval. Framed.
47. **WOOD BLOCK PRINT IN COLORS** *Elizabeth Colwell*  
 THE BRIDGE. Small figures crossing an arched bridge. Signed at lower right, ELIZABETH COLWELL.  
*Height, 5½ inches; length, 7 inches*
48. **AN ENGRAVING AND A DRAWING**  
 "The Melton Breakfast", colored aquatint by Lewis after Grant; war cartoon in black crayon, signed by Louis Rasmackers. Both framed. (*Private Owner*)
49. **PORTRAIT OF AN ARTIST**  
*Charles Antoine Coypel, French: 1694-1752*  
 Half-length figure to the right, the head turned to look toward the observer. He wears white shirt and orange waistcoat, and drapes his black jacket about him under his arm.  
*Pencil and Gouache: Height, 12½ inches; width, 10 inches*

2- 50. ETCHING BY SAMUEL PALMER  
The Early Ploughman. Proof impression of the first state.  
Framed. (*Private Owner*)

Sold with # 53  
51. FOUR MEZZOTINTS AFTER J. M. W. TURNER  
Dover, Deal, Plymouth, and Portsmouth. All fine early proofs.  
Framed. (*Private Owner*)

18- 52. TWO COLORED STIPPLE ENGRAVINGS  
"Paris and Oenone" by Bartolozzi after Kauffmann; "La Soli-  
tude" engraved by Canu. Both framed. (*Private Owner*)

8- 53. TWO FRENCH COLOR PRINTS  
Reproductions of "Le Carquois Epuise", by Delaunay after  
Baudouin; and "Le Chiffre D'Amour", by Delaunay after  
Fragonard. Both framed. (*Private Owner*)

4- 54. THREE FRENCH COLOR PRINTS  
Reproductions of "Les Bouquets", by Debucourt; and two  
others without titles or engravers' names. All framed. One  
stained. (*Private Owner*)

6- 55. THREE FRENCH COLOR PRINTS  
Reproductions of "Le Noce au Chateau", by Debucourt; "L  
Tambourin" and "Noce de Village", by Descourtis after  
Taunay. All framed. One stained. (*Private Owner*)

3- 56. THREE FRENCH COLOR PRINTS  
Reproductions of "Les Hazards Heureux de L'Escarpolette"  
by Delaunay after Fragonard; "Le Billet Doux", by De-  
launay after Lavreince; "L'Heureux Moment", by Delauna-  
after Lavreince. All framed. Two stained. (*Private Owner*)

18- 57. THREE ORIGINAL WOODCUTS BY DÜRER  
"The Visitation"; "The Angel Appearing to Joachim"; th  
same. All framed. Two slightly damaged. (*Private Owner*)

## 58. TWO MEZZOTINTS BY NORMAN HIRST

"Pinkie", after the painting by Sir Thomas Lawrence; "The Patterson Children", after the painting by Sir Henry Raeburn. Both signed proofs.

## 59. TWO MEZZOTINTS BY NORMAN HIRST

"Mrs. Siddons", after the painting by Thomas Gainsborough; "Lady Wrottesley", after the painting by John Hoppner. Both signed proofs.

## 60. A WATER-COLOR AND A PEN DRAWING

*Charles Jules Duvent, French: 1867-*

French troops moving over a road lined with trees, signed DUVENT, *Fevrier, 1916*; and a pen drawing of a corner of a square, signed C. DUVANT, *Bergues, 1915*. (Private Owner)

*Height, 14 inches; length, 21 inches*

*Height, 10 inches; length, 13 inches*

61. TWO PORTRAIT SILHOUETTES *American, Early XIX Century*

[A] Profile of an elderly gentleman, stamped *Peale's Museum*.

[B] Profile of a lady in Empire style coiffure. Framed. [Lot.]

## 62. MEZZOTINT ENGRAVING OF SIR JOSHUA REYNOLDS

SIR JOSHUA REYNOLDS, KNIGHT, President of the Royal Academy, member of the Imperial Academy at Florence. Pub. by V. Green, 1780, Newman St., Oxford St., London. Framed. Large folio.

## 63. TWO ENGRAVINGS IN COLORS

THE AGE OF INNOCENCE. Stipple engraving by J. Grozer after Sir Joshua Reynolds. Reprint. MISS MITLAND. Mezzotint engraving by F. C. Stevenson after George Romney. Signed artist's proof. Small folios. Framed.

## 64. PAINTING ON PAPER

*Gakyojin Hokusai*

Perched upon a brown branch is a white bird with red beak and feet. Signed by the artist at lower left. Framed.

*Height, 30 inches; width, 10½ inches*

From the Bing Collection

- 17-0  
65. VILLAGE FAIR *School of D. Teniers, Dutch: XVII Century*  
A company of traveling actors entertaining a crowd of villagers, among whom are itinerant vendors and market women offering their wares. *Height, 26 inches; length, 32½ inches*
- 10-  
66. PORTRAIT OF A YOUNG WOMAN IN A FEATHERED HAT *French School*  
Head-and-shoulders portrait to the right, the face turned to show the dark hat trimmed with a white plume and blue ribbons, perched upon the side of the head. *Height, 23½ inches; width, 19 inches*
- 25-  
67. GOLD AND BLUE *Herman Dudley Murphy, A.N.A., American: 1867-*  
Rising by a rocky mound are slender trees, their green and gold foliage spread before a cloudy blue sky. Signed at lower left with the initial M within a circle. *Height, 20 inches; length, 27 inches*
- 110-  
68. CHROMATIC WAVES *Alexander Harrison, N.A., American: 1853-1930*  
A rippling expanse of opalescent sea with breakers rolling upon the beach at left; the blue sky massed with clouds flame-touched by the setting sun. Signed at lower left, ALEX HARRISON. *Height, 30 inches; width, 30 inches*
- 30-  
69. THE SWING *Jerome Myers, N.A., American: 1867-*  
Numerous children in the playground of an East Side park, two swinging at right. Beyond are groups of men and women, and buildings seen vaguely in the distance. Signed at lower right, JEROME MYERS, N. Y. *Height, 16 inches; length, 20 inches*
- 5-  
70. OIL PAINTING: THE POOL AT BEZONS *Charles François Daubigny (?), French: 1817-1878*  
An irregular pond stretches across the foreground reflecting the luminous and stormy sky; behind it is a silhouetted line of low red-roofed houses. Signed at lower right, DAUBIGNY. (Private Owner) *Height, 29½ inches; length, 44½ inches*



## 71. TWO PAINTINGS

[A] DEUX NUES, by Jose de Tógores. From the Galerie Simon, Paris. [B] TREES, by De Sola. A spring landscape with two trees before a curtain of green foliage. Signed at upper right, SOLA.

[A] Height, 16 inches; width, 10½ inches

[B] Height, 18 inches; width, 15 inches

## 72. FRIENDS

*E. Kent Kane Wetherill, A.N.A., American: 1874-1929*

Three women in black, with white coifs, are strolling towards the foreground, a couple at left gazing after them. Signed in the foreground, E. K. K. WETHERILL.

Panel: Height, 6 inches; width, 5 inches

## 73. TWO MS. SHEETS ILLUMINATED IN GOLD AND GOUACHE

*Persian, XVI Century*

One with two pages beautifully illuminated with calligraphy and arabesques on a gold ground, the other with panel of delicate characters and having small diagonal sections.

Height, 8½ inches; length, 11 inches

Height, 13 inches; width, 8½ inches

## 74. PAINTING ON GLASS

*American, XIX Century*

Representing the Garden of Eden with the figure of Adam kneeling in adoration; animals and birds grouped around. Gilded frame.

Height, 17 inches; length, 38 inches

75. PAIR SANGUINE DRAWINGS *Everett Shinn, American: 1873-*

Brawl in a Bowery den, drawn in sanguine; signed E. SHINN and dated 1904. Framed.

Height, 17 inches; length, 22 inches

## 76. PASTEL PORTRAIT OF A YOUTH

*Mary Lawrence, English: XVIII Century*

Bust portrait of a young man with brown hair, wearing dark coat and white lace collar. Framed.

Height, 20 inches; width, 17 inches

Note: Mary Lawrence was the sister of the artist Sir Thomas Lawrence.

77. DANCER *Warren B. Davis, American: 1865-1928*  
Slender poised form draped in a diaphanous veil. Signed at lower left, WARREN DAVIS.

1750

*Chalk Drawing: Height, 16 inches; width, 8 inches*

78. NUDE *Warren B. Davis, American: 1865-1928*  
Interesting essay in foreshortening. Signed at lower right WARREN DAVIS.

15-

*Chalk Drawing: Height, 7 inches; length, 11¾ inch*

79. QUAI D'AUSTERLITZ *André des Fontaines, French: XIX Century*

At right are market carts and figures, and barges moored to the quay; the suburbs of Paris are seen in the left distance brightly illuminated. Signed at lower right, A. DES FONTAINES and dated '74.

700

*Pastel on Academy Board: Height, 11 inches length, 16½ inch*

80. PAIR DECORATIVE PORTRAITS IN OILS

*Alexis-Simon Belle, French: 1674-173*

Half-length portrait of a lady in a brown and gold dress drape in sapphire blue; and of a man in gray with a henna red cloak (Private Owner) *Oval: Height, 19 inches; width, 15¾ inch*

50-

LINENS, LACES, BROCADES, AND VELVETS

81. JARDINIÈRE CUT VELVET CUSHION

*Florentine, XVII Century*

Square cushion faced with ruby and blue cut velvet on a white ground. *Length, 21 inch*

12<sup>00</sup>

82. RUBY VELVET AND TAPESTRY CUSHION *XVII Century*

Small oblong cushion mounted with panel of wall tapestry. *Length, 15 inch*

5-

83. SILK EMBROIDERY CUSHION *Florentine, XVII Century*

Renaissance design of bold flowers and scroll work embroidered in colored silks; trimmed with silk fringe.

10-

*Length, about 19 inch*



84. GILET PERSAN EMBROIDERY TABLE MAT *XVII Century*  
 Diagonally striped *fleur de lis* design in soft rose and blue;  
 trimmed with gold galloon. *Length, 27 inches, width, 18 inches*
85. WINE RED CISELÉ VELVET TABLE RUNNER  
*Italian, XVII Century*  
 Symmetrical design on ivory ground of voluted scrollings of  
 blossoms and leafage, and putti supporting crowns. Worn.  
 (*Private Owner*) *Length, 9 feet; width, 27 inches*
86. TWO LINEN AND FILET LACE COVERS  
 Hemstitched linen, with *fil tiré* latticed edge and inset with two  
 panels of floral filet. Some tears. (*Private Owner*)  
*Lengths, 7 feet 9 inches and 6 feet 8 inches;*  
*width, 5 feet 8 inches*
87. PERSIAN JARDINIÈRE VELVET HANGING  
 Design of green cypress trees and birds in a wine red mihrab  
 with formal borders. (*Private Owner*)  
*Length, 5 feet 9 inches; width, 42 inches*
88. TWELVE FIL TIRÉ LACE AND LINEN TABLE COVERS  
 AND TWO CHAISE QUILTS  
 Covers of assorted sizes and designs; quilts in rose taffetas and  
 pink satin, with embroidered linen and lace and batiste and lace  
 overspreads (one monogrammed). [Lot.] (*Private Owner*)
89. LACE AND LINEN TABLE CLOTH WITH DOILIES AND COVERS  
 Comprising a circular table cloth and twenty-four round doilies;  
 Normandy patterns of pieces of *point de Milan*, vermicelli,  
 Gothic, and other lace, the cloth patterned in squares. [Lot.]  
 (*Private Owner*) *Diameter of cloth, 3 yards 12 inches*
90. LACE AND LINEN DOILIES AND TABLE COVERS  
 Comprising: three tray covers, thirty round doilies, twenty-two  
 square doilies, some tinted deep cream, and a side table cover;  
 Normandy patterns of pieces of *point de Milan*, vermicelli,  
 Gothic, and other lace. [Lot.] (*Private Owner*)

91. SIX TABLE COVERS AND ASSORTED DOILIES

17<sup>50</sup>

Cloths in assorted sizes of *fil tiré*, embroidered linen and lace; two dozen deep cream square doilies, two dozen small Normandy lace doilies, two dozen square filet and linen of two sizes, twenty-three square and five round filet doilies. [Lot.] (Private Owner)

92. SIX OLD LACE COVERS AND TWENTY-SIX DOILIES

7<sup>50</sup>

Covers of fragments of beautiful old lace in Normandy patterns; round doilies of old lace. [Lot.] (Private Owner)  
Covers, 14½ inches square

93. FIL TIRÉ AND LINEN LUNCHEON SET

12<sup>50</sup>

Comprising: runner beautifully designed with urn and animal figures, round centrepiece, twenty-one square doilies of two sizes, and fifteen round doilies of two sizes. [Lot.] (Private Owner)  
Length of runner, 1 yard 24 inches

94. FIL TIRÉ AND LINEN TABLE CLOTH, NAPKINS, AND COVER

27<sup>50</sup>

Circular cloth with sixteen napkins and side table cover; with insertion, medallions and fine edge of *fil tiré* patterned with vines. [Lot.] (Private Owner) Diameter of cloth, 4 yards

95. FIL TIRÉ AND LINEN BANQUET CLOTH WITH NAPKINS AND COVERS

27<sup>50</sup>

Large oblong cloth with twelve napkins, small runner, and two side table covers; designed with medallions and bands of finely worked *fil tiré*. [Lot.] (Private Owner)  
Length of cloth, 4 yards 22 inches; width, 2 yards 24 inches

96. EMERALD GREEN SILK DAMASK COVERLET

12<sup>50</sup>

Spanish, XVIII Century  
Allover design of diamond-shaped floral sprays, with foliage  
Length, 6 feet 7 inches; width, 5 feet

97. BACK AND SEAT COVERS IN SILK AND WOOL NEEDLEWORK

10-

The design of Flemish verdure tapestry. [Lot.]

98. TWO PAISLEY WOOL SHAWLS AND SIX SCARFS *XIX Century*  
Woven in colors in the Oriental taste. [Lot.]

99. CHINESE FINELY EMBROIDERED BLUE SILK COVERLET  
Designed with clusters of peonies, lotus blossoms and leaves,  
butterflies and birds surrounding a medallion of the same em-  
broidered in colored silks on blue ground; bordered with multi-  
color deep fringe. Lined.

*Length, 8 feet 3 inches; width, 7 feet 3 inches*

### FURNITURE AND DECORATIONS

100. PEKING ENAMEL BOX

Oblong; suitable for cigarettes. (*Private Owner*)

*Length, 7¼ inches*

100A. INLAID MAHOGANY TRIPOD STAND

*Circa 1820*

Circular tilting top with small mosaic inlay. (*Private Owner*)

*Height, 7½ inches*

101. TWO CIGARETTE BOXES, ASHTRAY, AND CASE  
OF IVORY COUNTERS

Boxes of Peking enamel and decorated red lacquer; ashtray of  
soapstone carved with crab; and engraved silver box with ivory  
clips. [Lot.] (*Private Owner*)

102. SILVER AND CARVED GREEN JADE CIGARETTE BOX

Silver box, top mounted with green jade plaque carved with a  
bird and hawthorn spray. (*Private Owner*)

*Length, 7 inches*

103. PERSIAN DECORATED LACQUER PEN CASE AND MIRROR CASE

Pen case lacquered with a design of flowers and three portrait  
medallions; mirror case lacquered on both sides with full-length  
figures. [Lot.] (*Private Owner*)

104. BRASS DESK SET

12<sup>50</sup> Comprising: double inkstand, pair candlesticks, four blotter corners, scissors, paper knife, paper weight, stationery file, calendar, bill file, two-handled cup, pen holder, seal; monogrammed. [Lot.] (*Private Owner*)

105. CARVED CARNELIAN COCK AND HEN FIGURINES

12<sup>50</sup> With stand. One foot chipped. (*Private Owner*)  
 Heights,  $3\frac{1}{2}$  and  $2\frac{3}{4}$  inches

106. GOLD-EMBROIDERED VELVET BOX *Persian, XVIII Century*

13- Oblong box of embroidered red velvet, with hinged cover.  
 (*Private Owner*) Length, 12 inches

107. MINIATURE PAINTING IN GOUACHE

12<sup>50</sup> *Indian School, XIX Century*  
 Procession of a Rajah riding a black elephant, with numerous white-robed attendants; framed. (*Private Owner*)  
 Height, 15 inches; width,  $10\frac{1}{4}$  inches

108. TWO FANS

4- Chinese black and gold lacquer fan, painted with figures of ladies, flowers, and birds, on gold paper; and eighteenth century fan of red lacquer. Imperfect. (*Private Owner*)

109. PEWTER BAS-RELIEF ROUNDSEL AND ORNAMENT

6- *XVI Century*  
 Roundel depicting classical figures in a wooded landscape; and Swiss hat peg in the form of a page holding a shield. [Lot.]  
 Diameter of roundel,  $5\frac{1}{4}$  inches

110. BRONZE DORÉ BOUDOIR CLOCK

5- *Louis XI Style*  
 Dial inscribed: *Made for A. Stowell and Co., Boston.* Slightly imperfect. (*Private Owner*) Height,  $15\frac{1}{2}$  inches

111. TWO ORNAMENTS

3- Belt ornament inset with turquoises upon a gilded ground;  
 Russian two-handled silver vessel inset with ruby red and green stones. (*Private Owner*) Height of vessel,  $4\frac{3}{4}$  inches

## 112. DECORATED WOOD BELLOWS AND A KNEADING BOWL

*American, Early XIX Century*

Bellows brass-trimmed and painted; bowl of burl ash. [Lot.]

## 113. CARVED WOOD STATUETTE OF A MARTYR

*Northern French, XVI Century*

Boldly modeled, draped in a loin cloth and cape.

*Height, 20 inches*

## 114. BLANC DE CHINE PORCELAIN LAMP

Formed as statuette of a priest; wired for single light, with white silk shade and jade finial.

*Height, 20 inches*

## 115. FOUR CHINESE STATUETTES, FITTED AS LAMPS

Pair pottery statuettes with parchment shades; and pair carved ivory statuettes with velvet shades; fitted for electricity. (*Private Owner*)*Height, 19½ inches*

## 116. CARVED ROSE QUARTZ LAMP

Carved as a seated female figure, on teakwood and gilded metal base; wired for single light. With rose pink silk shade and jade finial.

*Height, 17 inches*

## 117. POLYCHROMED AND GILDED TERRA COTTA BAS RELIEF

*After Antonio Rossellino*Virgin in scarlet robe and blue mantle, holding the Child on her lap and flanked by two cherub heads; in gilded tabernacle. (*Private Owner*)*Height, 41 inches; width, 26½ inches*

## 118. TWO PAIRS BRASS ANDIRONS

*Colonial Style*Vase and bell tops. (*Private Owner*)*Heights, 21½ and 19 inches*

## 119. BRASS FIREPLACE GARNITURE

*Colonial Style*Comprising: pair vase-top andirons, fire screen, Cape Cod lighter, shovel, poker, tongs, and stand. [Lot.] (*Private Owner*)*Height of andirons, 23 inches*

120. BRASS FIREPLACE GARNITURE *Colonial Style*

Comprising: pair acorn-top andirons, fire screen, Cape Cod lighter, shovel, poker, tongs and stand. [Lot.] (*Private Owner*)  
*22<sup>nd</sup>* *Height of andirons, 16 inches*

121. SET OF THREE GILDED METAL AND GLASS

PRISM CANDELABRA *American, XIX Century*  
*7<sup>th</sup>* One for three lights, a pair for single lights; on marble bases. Some prisms missing. [Lot.] *Height, 13 and 15 1/2 inches*

122. PAIR COLONIAL IRON AND BRASS HANDLES

*Pass* Brass urn finial and iron shaft, on splayed legs. *Height, 24 inches*

123. BRONZE DORÉ FIREPLACE GARNITURE *Louis XVI Style*

*8-* Comprising: two pairs of vase-top *chenets*, fire screen, poker, shovel, brush, and stand. (*Private Owner*)  
*Height of chenets, 13 and 15 inches*

124. PAIR MARBLE URNS, WITH COVERS

*22<sup>nd</sup>* Of white marble streaked with brown, with two mermaid handles. (*Private Owner*) *Height, 20 inches*

125. PAIR EARLY FEDERAL BRASS ANDIRONS

*7<sup>th</sup>* Baluster-shaped, on splayed legs with ball feet. *Height, 22 1/2 inches*

126. PAIR EARLY FEDERAL BRASS ANDIRONS

*Pass* Somewhat similar to the preceding, but smaller. *Height, 18 inches*

127. SET OF EIGHT CRYSTAL AND GILDED BRONZE WALL LIGHTS

*40-* In the Louis XVI taste; fitted with two lights each. *Height, 18 inches*

128. BRASS FIREPLACE GARNITURE *Colonial Style*

*30-* Comprising: pair vase-top andirons, fire screen, shovel, poker, tongs, stand, and fire guard. [Lot.] (*Private Owner*)  
*Height of andirons, 20 1/2 inches; length of fire guard, 47 inches*



129. PAIR SILVERED COPPER CANDLESTICKS MOUNTED AS  
HALL LANTERNS *Italian, Late XVII Century*  
Of an elaborate Baroque design, *reponssé* with cartouches;  
fitted for electricity. Glazed lanterns of later date.  
*Height, 61 inches*
130. EARLY FEDERAL PIERCED BRASS FENDER AND FIRE TOOLS  
Handsome fender embellished with anthemion motive and  
pierced with a band of leaf arabesque. Accompanied by brass-  
handled shovel, poker, and tongs with rests.  
*Height of fender, 9½ inches; length, 39 inches*
131. ADAM CARVED MAHOGANY MEDALLION-BACK ARMCHAIR
132. ELM WINDSOR ARMCHAIR  
With brocatelle-covered seat cushion.
133. TWO MAHOGANY COFFEE TABLES AND A CAKE STAND  
Occasional tables on spiral supports; cake stand with three  
shelves. Imperfect. [Lot.] (*Private Owner*)
134. PAIR LOW UPHOLSTERED CHAIRS  
With loose cushion covered in green brocatelle, fringed; ma-  
terial on arms and cords slightly worn.
135. CARVED MAHOGANY AND CRIMSON DAMASK BENCH  
In the Chippendale taste. Oblong top in antique rose crimson  
damask. *Height, 21 inches; length, 25 inches*
136. CAROLEAN GILDED BRASS WALL MIRROR  
Raised centre mirror and four mirror panels and crest, the cor-  
ners and crest ornamented with openwork brass decoration.  
Imperfect. (*Private Owner*)  
*Height, 53½ inches; width, 33 inches*
137. SET OF FIVE CARVED MAHOGANY CHAIRS  
*Early Colonial Style*  
Leaf-carved fiddle backs, rush seats, Spanish feet. Two arm-  
chairs and three side chairs. (*Private Owner*)

138. UPHOLSTERED CHAISE LONGUE

Slip covers in rose and yellow striped taffetas; on mahogany square legs. With uncovered mattress. [Lot.] (*Private Owner*)  
*20-* Length, 6 feet

139. PAIR CARVED AND GILDED GUÉRIDONS, WITH MARBLE TOPS

Circular white marble top, on white and gold tripod with claw feet. (*Private Owner*)  
*10-* Height, 36½ inches; diameter, 17¾ inches

140. LAQUÉ AND TAFFETAS LOVE SEAT AND BERGÈRE

*Louis XVI Style*  
 Covered in striped sky blue and pink silk taffetas. [Lot.] (*Private Owner*)  
*25-* Length of love seat, 52 inches

141. UPHOLSTERED DIVAN SOFA IN STRIPED YELLOW BROCADE

On short mahogany square legs. Loose cushion in similar material. (*Private Owner*)  
*30-* Length, 6 feet

142. NEST OF FOUR INLAID MAHOGANY COFFEE TABLES

Oblong, on slender square legs. (*Private Owner*)  
*10-* Width, 27 inches

143. TWO ARMCHAIRS

One upholstered in rose beige taffetas; the other with open mahogany arms, the back and seat in blue figured satin. (*Private Owner*)  
*15-*

144. PAINTED DRESSING TABLE AND SIDE CHAIR

Painted bluish green, and decorated with floral sprays; dressing table with vanity mirror in three sections, and plate glass top. [Lot.] (*Private Owner*)  
*15-* Total height of dressing table, 5 feet; length, 5 feet 2 inches

145. LOT OF PAINTED TERRACE FURNISHINGS

Comprising: settee with cane back and seat, loose linen and four down cushions, pair consoles with white marble tops (damaged), two pairs of jardinière stands with cane sides; painted bluish green and decorated in white. (*Private Owner*)  
*Pass* Length of settee, 8 feet; length of consoles, 57 inches



## 146. PAINTED BEDROOM SUITE

Comprising: pair single beds with box spring and mattress, chiffonier, dressing table with swinging mirror, cheval glass, writing desk, bedside table, two side chairs and occasional table; painted ivory, with green band decoration. [Lot.] (Private Owner)

## 147. BLACK AND RED LACQUER COMMODE

Oblong top and sides enclosing cupboard with two doors lacquered with Japanese lake scenes; on cabriole legs. (Private Owner)  
Height, 42 inches; width, 31 inches

## 148. TWO UPHOLSTERED WING ARM CHAIRS

Upholstered in printed linen of differing designs. (Private Owner)

149. CARVED AND GILDED WALL MIRROR *Louis XVI Style*

Frame carved with floral sprays and leaf scrolls and crested with a festoon of flowers and small circular oil painting of a shepherdess. (Private Owner)  
Height, 59 inches; width, 33 inches

## 150. PAIR UPHOLSTERED EASY CHAIRS, IN STRIPED TAFFETAS

Covered in striped blue and yellow taffetas, with loose cushions. (Private Owner)

## 151. TWO UPHOLSTERED WING ARMCHAIRS

One with down cushion and brown floral cretonne loose cover, the other with printed white linen loose cover. (Private Owner)

152. CARVED AND GILDED WALL MIRROR *Louis XVI Style*

Oblong mirror crested with an urn festooned with drapery. (Private Owner)  
Height, 40 inches; length, 44 inches

## 153. WROUGHT IRON LECTERN AND TORCHÈRE

Book rest with double-headed eagle upon crimson velvet panel, on tripod support, Italian, XVI Century; torchère fitted for electricity, with parchment shade, late Renaissance style. [Lot.]  
Height, 56½ and 64 inches

154. PAINTED IRON AND WOOD STANDARD LAMP *Venetian Style*  
Decorated pergamine shade; fitted for electricity.

Pass

Height, 55 inches

155. PAIR UPHOLSTERED MAHOGANY EASY CHAIRS  
IN STRIPED TAFFETAS

50-

Covered in striped blue and yellow taffetas; loose cushions.  
(*Private Owner*)

156. TWO UPHOLSTERED EASY CHAIRS

25-

Overstuffed chairs with floral linen loose covers, one with down cushion. (*Private Owner*)

157. CARVED AND LAQUÉ CONSOLE

Pass

*Georgian Style*

*Laqué* green and white, with wave-scrolled frieze and acanthus-voluted square legs; top painted to simulate *vert antique* marble.  
(*Private Owner*) Height, 32½ inches; length, 6 feet 2 inches

158. FOUR INLAID TULIPWOOD AND VELOURS BANQUETTES

20-

*Louis XVI Style*

Oblong bench in dark brown velours; embellished with gilded bronze mounts.  
Length, 24 inches

159. FOUR INLAID TULIPWOOD AND VELOURS BANQUETTES

20-

*Louis XVI Style*

Similar to the preceding.  
Length, 24 inches

160. DECORATED SATINWOOD KIDNEY KNEEHOLE DESK

32<sup>10</sup>-

*Hepplewhite Style*

Front with one concave and eight convex drawers, decorated in the Adam style in colors on a richly figured satin veneer; back arranged to harmonize. Height, 30 inches, length, 61 inches

161. LOUIS XIV CARVED WALNUT ARMCHAIR  
IN ANTIQUE VERDURE TAPESTRY

70-

Tapestry covered back and seat woven with birds and foliage in light and dark colors. Carved walnut frame of later date.

## 162. SHERATON PAINTED AND DECORATED COMMODE

Shaped top inlaid with a half pattern, paneled double cupboards and concave returns with painted medallions of flowers and fruit; gilded and spirally reeded turned pilasters. Interior fitted with small drawers. (*Private Owner*)

*Height, 37¼ inches; length, 5 feet 1 inch*

## ORIENTAL RUGS

## 163. CHINESE RUG

Tan field, woven with sprays of flowers, utensils, and medallion and spandrel frets; ivory border of birds and Shou emblems.

(*Tokatyan*) *Length, 4 feet 1 inch; width, 2 feet 2 inches*

## 164. TWO TEKKE BOKHARA RUGS

Tawny red field, woven with chains of octagons in orange and ivory, dark blue, and brick red; geometrical borders.

*Length, 4 feet 6 inches; width, 3 feet 6 inches*

*Length, 3 feet 7 inches; width, 3 feet*

## 165. CAUCASIAN RUG

Sky blue field, woven with square portals and lamps; scarlet and blue borders of short scrolled leaves. (*Tokatyan*)

*Length, 4 feet 5 inches; width, 3 feet 5 inches*

## 166. TEKKE BOKHARA RUG

Tawny red field, woven with three chains of orange and ivory octagons within geometrical guards. (*Tokatyan*)

*Length, 4 feet 9 inches; width, 3 feet 6 inches*

## 167. DERBEND RUG

Woven with three octagonal figures in a trellised ground, with ivory serrated 'vine' border and rosetted guards.

*Length, 5 feet 2 inches; width, 3 feet 3 inches*

## 168. TEKKE BOKHARA RUG

Tawny red field, woven with four chains of parti-colored octagons alternating with crosses; border of serrated foliage.

(*Tokatyan*) *Length, 6 feet 5 inches; width, 5 feet*

169. KIRMAN RUG

Designed with a shaped medallion filled with blossoms and leaves in soft rose and pale green on ivory white and rose field.

35-

*Length, 6 feet 5 inches; width, 4 feet 8 inches*

170. MOUSHKABAD FEREGHAN RUG

Lozenge-shaped centre field filled with small blossoms surrounding a medallion in rich divers colors on midnight blue.

15-

Three floral borders.

*Length, 6 feet 8 inches; width, 4 feet 3 inches*

171. KIRMAN RUG

Featuring a medallion of carnations and leaves in rose and pale turquoise on ivory white.

25-

*Length, 6 feet 5 inches; width, 4 feet 3 inches*

172. SET OF THREE CHINESE OVAL RUGS

Jade green ground, woven with scattered blossoms in pastel shades of rose, mauve, and fawn. [Lot.]

45-

*Length of one, 7 feet 4 inches; width, 4 feet 6 inches*

*Length of two, 4 feet 5 inches; width, 2 feet 6 inches*

173. CHINESE BLUE AND WHITE RUG

Ivory ground, woven with three rows of floral medallions, within a peony border. (Private Owner)

15-

*Length, 6 feet 9 inches; width, 4 feet*

174. ANTIQUE KABISTAN RUG

Centre filled with beautiful design of stepped medallions in divers colors on a royal blue ground; three borders of conventionalized cartouches and fleurettes on amber yellow and blue. Fine quality.

60-

*Length, 6 feet 7 inches; width, 5 feet 5 inches*

175. KIRMAN RUG

Double-arched ivory field, with dark red spandrels and eight-lobed medallion in tawny red, green and ivory; ivory and tête de nègre floral borders.

25-

## 176. TABRIZ RUG

Double-arched tomato red field, with pendent blue floral medallion and scrolled spandrels; ivory floral border.

*Length, 6 feet 2 inches; width, 4 feet 3 inches*

## 177. KURDISTAN RUG

Centre filled with oblong stepped medallion of conventionalized flowers on deep blue and ivory white. Four narrow borders.

*Length, 7 feet 10 inches; width, 4 feet 4 inches*

## 178. KURDISTAN RUG

Centre field with three stepped medallions in rose, ivory white, and deep blue. Five narrow borders.

*Length, 7 feet 2 inches; width, 5 feet*

## 179. LAVEHR KIRMAN RUG

Tan field, woven with nose-gays of flowers and floral shrubs principally in rose red, deep blue, green, and ivory; rose floral border between sapphire blue guards patterned with foliage. Repair at centre.

*Length, 7 feet 8 inches; width, 4 feet 5 inches*

## 180. ANTIQUE SHIRAZ RUG

Sapphire blue field with floral and geometrical design; beige border with chain of octagonal palmettes.

*Length, 7 feet 7 inches; width, 5 feet 7 inches*

## 181. KOUBA CABISTAN RUG

Centre field shows a row of serrated medallions and small animal forms in pleasing colors on lapis blue. Three floral borders.

*Length, 8 feet 10 inches; width, 3 feet 6 inches*

## 182. ANTIQUE HAMADAN RUG

Showing rows of small conventionalized blossoms in quiet colors on a soft brown field. Two floral borders.

*Length, 9 feet 7 inches; width, 3 feet 11 inches*

## 183. YOMUD BOKHARA RUG

Characteristic wine red field with geometric design of conventionalized floral motives in deep blue with touches of ivory white.

*Length, 7 feet 2 inches; width, 5 feet 1 inch*

184. CHINESE RUG

Black field, woven in pastel shades of rose, celadon, blue, and fawn with a smoking incense burner and at the opposite corner two bats and a floral spray, signifying Happiness.

25-

Length, 7 feet 9 inches; width, 5 feet

185. ANATOLIAN PRAYER RUG

Pistache green field beneath a pointed prayer arch, with dotted scarlet spandrels; scarlet and old gold floral borders. Long shaggy pile; needs repair. (Private Collector)

17.0

Length, 8 feet 2 inches; width, 6 feet 4 inches

186. YURUK RUG

Showing two rows of serrated hexagons alternating with stripes in rose, blue and ivory white. Three narrow borders.

20-

Length, 9 feet 4 inches; width, 4 feet 6 inches

187. ANTIQUE BAKSHAISH RUG

Interesting geometrical design of flowers and vines in multi-color mosaic effect. Worn, and some repairs.

22.0

Length, 9 feet 3 inches; width, 5 feet 6 inches

FURNITURE [Continued]

188. PAIR DECORATED SATINWOOD LOVE SEATS

Hepplewhite Style

Arched back, the rails beautifully decorated *en camaïeu* and enriched with carved and gilded volutes. Covered with warp-painted beige satin in a *chinoiserie* pattern. Length, 40 inches

50-

189. DECORATED FOUR-FOLD SCREEN

Four arched panels with flowers and bird decoration in colors; trimmed with brass nails. (Private Owner)

10-

Height, 6 feet; length, 8 feet

190. POLE SCREEN, BRIDGE LAMP, AND PAIR TALL CANDLESTICKS

Carved mahogany tripod with eighteenth century oval panel iron bridge lamp fitted for electricity; tall wrought iron candlesticks. [Lot.]

10-

Heights, 49, 56, and 63 inches



## 191. DRESSER AND PAIR SIDE CHAIRS

Low oak dresser with two drawers and seventeenth century molded top, English Jacobean style; pair Stuart carved and painted walnut side chairs, English, late seventeenth century, with modern unicorn needlework seats. [Lot.]

*Dresser: Height, 32½ inches; length, 42 inches*

## 192. CARVED WALNUT WRITING TABLE

The kneehole front fitted with one long drawer and two small drawers; baluster-turned legs and Baroque-scrrolled frontal stretchers.

*Height, 29 inches; length, 54 inches*

## 193. MAHOGANY BABY GRAND PIANO

*Steinway and Company, New York*  
Serial numbers W1744 and 190934; good tone and condition.

*Height, 39 inches; length of keyboard, 56 inches*

194. TEN WALNUT CABRIOLE-LEG DINING CHAIRS  
AND TWO ARMCHAIRS

*Georgian Style*  
Back and seat covered in brown leatherette. (Private Owner)

195. EIGHT WALNUT CABRIOLE-LEG DINING CHAIRS  
AND ARMCHAIR

*Georgian Style*  
*En suite* with the preceding. (Private Owner)

## 196. WALNUT CABRIOLE-LEG EXTENSION DINING TABLE

*Georgian Style*  
Oval table with eleven extension leaves; cabriole legs, shell-carved at the knees, with lion-claw feet. (Private Owner)

*Height, 29½ inches; length, 6 feet extending to 18 feet 10 inches*

197. DIRECTOIRE FRUITWOOD BEDSIDE TABLE  
AND A FIRE SCREEN

[A] Small tray top with tambour front. [B] Rectangular fire screen lined with old carmine printed *toile de Jony*. [Lot.]

198. TWO UPHOLSTERED EASY CHAIRS

30-

Overstuffed chairs, with down cushions and printed linen loose covers; one upholstered in green denim. (*Private Owner*)

199. INLAID ACAJOU AND TULIPWOOD LIBRARY TABLE

*Directoire Style*

17<sup>50</sup>

Oblong inlaid and rimmed top, frieze with three drawers; on square tapered and paneled legs; *bronze doré* mounts. (*Private Owner*)  
*Height, 28 inches; length, 57 inches*

200. TWO UPHOLSTERED EASY CHAIRS

40-

Overstuffed chairs upholstered in green rep, with down cushions and cretonne loose covers of Queen Anne crewel design. (*Private Owner*)

201. MARBLE BIRD BATH

*Romanesque Style*

50-

Octagonal bath on round column carved with ascending grapevine and archaistic figures and animals. (*Private Owner*)  
*Height, 43 inches; diameter of bath, 19 inches*

202. INLAID ACAJOU AND TULIPWOOD WRITING DESK

*Directoire Style*

17<sup>50</sup>

Tooled leather and paneled top, kneehole front with centre drawer and two deep side drawers, on square tapering legs; *bronze doré* mounts. (*Private Owner*)  
*Height, 29 inches; length, 49 inches*

203. TWO UPHOLSTERED EASY CHAIRS

35-

Overstuffed chairs, with down cushions and printed linen loose covers; one upholstered in green twill. (*Private Owner*)

204. MARBLE FIGURE OF PAULINE BONAPARTE AS VENUS  
AFTER CANOVA

55-

Standing figure with arms crossed, holding a drapery and with Grecian headdress; on plinth. (*Private Owner*)  
*Total height, 5 feet 4 inches*



205. YELLOW LACQUER BOOKCASE *Queen Anne Style*  
 Upper part with glazed door, the lower with two doors on cabriole stand. Decorated in the *chinoiserie* taste in relief and gold. *Height, 66 inches; width, 21 1/2 inches*
206. INLAID OAK SECRETARY-BOOKCASE *Flemish XVIII Century Style*  
 Upright with double cupboards, and fitted slant-front desk inlaid with oval paterae; three small and three long drawers lined with striped brocade. (*Private Owner*)  
*Height, 7 feet 6 inches; width, 44 inches*
207. FLOWER-PAINTED IVORY AND GREEN LAQUÉ BEDSTEAD *Louis XV Style*  
 Double bedstead lined with striped rose silk. Complete with box spring and mattress. (*Private Owner*)  
*Length, 6 feet 10 inches; width, 6 feet 4 inches*
208. PAIR ESCABEAUX DINING CHAIRS IN OLD TAPESTRY  
 Louis Treize form with arched panel back, bowed arms on baluster rests.
209. PAIR ESCABEAUX DINING CHAIRS IN OLD TAPESTRY  
 Similar to the preceding.
210. PAIR ESCABEAUX DINING CHAIRS IN OLD TAPESTRY  
 Similar to the preceding.
211. PAIR ESCABEAUX DINING CHAIRS IN OLD TAPESTRY  
 Similar to the preceding.
212. PAIR ESCABEAUX DINING CHAIRS IN OLD TAPESTRY  
 Similar to the preceding.
213. PAIR ESCABEAUX DINING CHAIRS IN OLD TAPESTRY  
 Similar to the preceding.

214. CARVED AND CANED BEECHWOOD SUITE  
IN FLOWERED BROCADE

*Louis XVI Style*

Comprising pair settees; bergère; and three oval-back side chairs embellished with valanced back cushions and seat cushions in flowered and striped pink silk brocade. [Lot.]  
(Private Owner) Length of settee, 5 feet 9 inches

30-

215. UPHOLSTERED RED LEATHER LIBRARY SUITE

Comprising: pair of easy chairs and six side chairs; walnut frames. (Private Owner)

40-

215A. LAQUÉ CARVED AND GILDED BEDSTEAD *Louis XVI Style*

Solid head and footboard surmounted with a carved floral wreath and quiver, fluted posts; with box spring and mattress.  
(Private Owner) Length, 6 feet; width, 48 inches

170

215B. CARVED BEECHWOOD AND CANE FOUR-POST BEDSTEAD

Front posts spiraled; crewel embroidery canopy flounce and pair of hangings lined with green linen; box spring and mattress. (Private Owner)

35-

Length, 6 feet 6 inches; width, 44 inches

216. DECORATED BEDROOM SUITE

Comprising: pair of single bedsteads with box spring and mattress, chifforobe with dressing mirror, dressing table with swinging mirror, bedside table, slant-top writing desk, table, armchair, and side chair; painted black, with floral decoration. [Lot.] (Private Owner)

180-

217. SET OF GREEN PAINTED WICKER FURNITURE

Comprising: round table, wing-back settee, three wing armchairs, chaise longue, three armchairs, child's armchair; all with loose seat cushions of glazed chintz, and seven odc cushions. [Lot.] (Private Owner)

40-

Length of settee, 5 feet 1 inch

## 218. SET OF GREEN PAINTED REED FURNITURE

Comprising: oval table, eight assorted armchairs, two side chairs, and two footstools; with four flowered chintz cushions.

[Lot.] (Private Owner) Length of table, 36 inches

## ORIENTAL RUGS [Continued]

## 219. YOMUD BOKHARA RUG

*Tête de nègre* field with an allover design of serrated scarlet octagons, within a border of lozenge-shaped dies in the colors of the field.

Length, 9 feet; width, 6 feet

## 220. CHINESE OVAL RUG

Black field, woven with a garland of blossoms in pastel blue, mauve, rose, and fawn shades.

Length, 7 feet 3 inches; width, 4 feet 6 inches

## 221. YOMUD BOKHARA RUG

So-called 'black Bokhara', with *tête de nègre* ground and all-over design of stepped octagons, in scarlet and ivory; geometrical borders.

Length, 7 feet 6 inches; width, 5 feet 6 inches

## 222. CHINESE OVAL RUG

Sapphire blue field, woven with a labyrinth of floral scrollings in tan with touches of rose, green, and blue.

Length, 7 feet 8 inches; width, 4 feet 6 inches

## 223. ANTIQUE HAMADAN RUNNER

Showing a series of large lozenges filled with conventionalized blossoms in rose, ivory white, and deep blue on camel's-hair brown field.

Length, 10 feet 8 inches; width, 3 feet 4 inches

## 224. KURDISTAN RUNNER

Herati field in quiet colors in deep blue. Three floral borders.

Length, 11 feet 3 inches; width, 3 feet 5 inches

## 225. MESHED KHORASSAN RUG

Deep blue centre field with compact Herati design in rose and white. Three floral borders in similar colors.

Length, 11 feet; width, 6 feet 5 inches

226. KURDISTAN RUNNER

15- Midnight blue centre field with symmetrical rows of small pear-shaped floral motives in contrasting colors. Three borders in amber and lapis blue. Length, 10 feet; width, 3 feet 6 inches

227. KURDISTAN RUNNER

15- Narrow field with row of serrated octagons forming a pole medallion in light and dark colors. Three floral borders. Length, 10 feet 7 inches; width, 3 feet 3 inches

228. TEHERAN CARPET

110- Midnight blue field, trellised with curving yellow leaves enclosing rose and blue floral arabesques: deep red border of curving feathery leaves and quatrefoil plaquettes of jasmine blossoms. Length, 11 feet 5 inches; width, 8 feet 9 inches

229. CHINESE RUG

45- Jade green field, woven with an allover design of scrolling voluted foliage in old gold and mauve, falling into seven rows. Length, 8 feet 8 inches; width, 6 feet

230. MESHED KIRMAN CARPET

120- Woven with concentric floral medallions of midnight blue, rose crimson, and ivory, with sky blue spandrels; crimson lotus border with floral guards. Length, 11 feet 9 inches; width, 8 feet 9 inches

231. CHINESE CARPET

80- Plain *bois de rose* rectangular field, surrounded by a growing hedge of blue, gray, and fawn blossoms with blue black foliage, against a shell pink background. (Tokatyan) Length, 11 feet 7 inches; width, 9 feet 1 inch

232. KURDISTAN RUNNER

35- Herati field in rose and turquoise in midnight blue. Three floral borders. Length, 13 feet 2 inches; width, 3 feet 5 inches

## 233. KIRMAN CARPET

Ivory field, profusely patterned with an elongated medallion, spandrels and floral branches; ivory border with scrolling vine in blue and rose.

*Length, 12 feet 3 inches; width, 8 feet 10 inches*

## 234. KASHAN VASE CARPET

Tan field, woven in colors with vases of blossoms and flowering shrubs with exotic bird figures, repeated in the celadon border; blue floral guards.

*Length, 11 feet; width, 8 feet 6 inches*

## 235. KURDISTAN RUNNER

Narrow field composed of symmetrical rows of small shrubs in quiet colors. Three borders in rose and amber yellow.

*Length, 13 feet 1 inch; width, 3 feet 5 inches*

## 236. ANTIQUE KARADJA RUNNER

Narrow field shows a row of serrated lozenges filled with flowers in rose, ivory white, and deep blue. Three floral borders.

*Length, 15 feet 8 inches; width, 3 feet 8 inches*

## 237. MESHED KIRMAN CARPET

Ivory field with allover conventionalized design of small sprays of flowers; orange and red borders with lotus and floral branches.

*Length, 19 feet 3 inches; width, 11 feet 8 inches*

## 238. KURDISTAN RUG

Ivory white centre field filled with symmetrical rows of small pink and deep blue blossoms and shrubs. Main border filled with flowers on midnight blue.

*Length, 19 feet 4 inches; width, 3 feet 5 inches*

## 239. AUBUSSON CARPET

Rose red field, woven with leaf scrollings and centring a floral cartouche in greenish fawn, with festoons of flowers upon a border of the same color. Worn. (*Tokatyan*)

*Length, 18 feet 9 inches; width, 14 feet*

## 240. ANTIQUE GHIORDES PRAYER RUG

Mihrab ivory white with conventionalized blossoms in quiet colors; the remainder of the field and borders striped and floriated.

*Length, 5 feet 5 inches; width, 4 feet*

[END OF FIRST SESSION]

6,290<sup>50</sup>



## SECOND SESSION

Thursday, June 2, 1932, at 2:15 p.m.

*Catalogue Numbers 241 to 502 Inclusive*

---

### SINGLE-COLOR AND DECORATED PORCELAINS AND POTTERY

241. SIX CHINESE AND JAPANESE CERAMICS

Three small blue and white and mirror black vases; three Satsuma and Hizen glazed pottery tea jars. One piece imperfect. [Lot.] *Heights, 3½ to 6½ inches*

242. THREE DECORATED CORAL-RED PORCELAIN BAT CUPS

*Ch'ien-lung*

In the form of bats (*fei shu*), glazed coral red and with gilded decoration, the interiors robin's egg blue. Have stands. [Lot.] *Heights, 2¼ and 3 inches*

243. TWO BLANC DE CHINE CABINET VASES

*Ch'ien-lung*

Bottle-form vases modeled in relief with saurians.

*Heights, 4¼ and 5 inches*

244. THREE SMALL CHINESE PORCELAIN OBJECTS

*Ch'ien-lung*

*Famille rose* semi-eggshell porcelain cup and saucer enameled with cocks and peonies in colors; two blue and white circular powder boxes. [Lot.]

245. FIVE SMALL DECORATED PORCELAIN DISHES

*Tao Kuang*

With floral medallion and border, the exterior glazed starch blue with incised floral design and four reserves. Seal mark underfoot. *Diameter, 4½ inches*

246. FOUR JAPANESE GLAZED POTTERY BOWLS

With incised and painted decoration, crackled soft brown glaze. [Lot.] *Diameters, 5½ and 6½ inches*



247. TWELVE DECORATED PORCELAIN TEACUPS *Ch'ien-lung*  
 Enameled with flowers and rockery in colors on a white ground,  
 with calligraphy; seal mark of the reign underfoot.

*Diameter, 3½ inches*

248. FAMILLE VERTE TEAPOT AND LADLE *Yung Chêng*  
 Enameled in green and *ronge de fer* with fish, flying bats, and  
 peaches. [Lot.]

249. BLANC DE CHINE STATUETTE OF PU TAI *Ch'ien-lung*  
 Laughing seated figure with bare belly, one knee raised; in-  
 vested with a flour white glaze. Fingers damaged. Has stand.

*Height, 5½ inches*

250. SIX DECORATED PORCELAIN SHALLOW DISHES *Yung Chêng*  
 Decorated in colors on a white ground with peony branches and  
 flying bats.

*Diameter, 6 inches*

251. PAIR CHINESE PORCELAIN BIRD FIGURINES AND FU-LION  
 Parrots glazed turquoise blue; Ming Fu-lion in cucumber green,  
 brown, and yellow, seated and with paw on ball. [Lot.]  
 (*Private Owner*)

*Heights, 8½ and 7¾ inches*

252. SIX FAMILLE VERTE TEACUPS AND SIX SAUCERS *K'ang-hsi*  
 Fluted in chrysanthemum form, and decorated in colors with  
 flowering branches of peonies and prunus, roosters, and song  
 birds.

253. FOUR DECORATED CANARY YELLOW PORCELAIN DISHES  
*Knang Hsi*

Enameled in colors with a scrolling floral medallion surrounded  
 by the Eight Buddhist Emblems; six-character mark of the  
 reign.

*Diameter, 6 inches*

254. SIX DECORATED PORCELAIN DISHES *Ch'ien-lung*  
 Enameled on a flour white ground with branches of peonies,  
 chrysanthemums, peaches, and flying butterflies. Blue seal  
 mark underfoot.

*Diameter, 6 inches*

## 255. SIX DECORATED PORCELAIN BOWLS

*Tao Knang and Knang Hsü*

Decorated in blue upon white with floral patterns and animals in landscape, the exterior glazed millet yellow, with flowers, utensils, and floral and animal reserves. Six-character marks.

*Diameter, 6 inches*

## 256. SIX FAMILLE ROSE PORCELAIN BOWLS

*Tao Knang*

The exterior glazed rose pink, with floral design and four circular landscape reserves. Seal marks of the reign.

*Diameter, 6 inches*

## 257. PAIR DECORATED PORCELAIN BOWLS

*Tao Knang*

The interior glazed white with flying bats in *rouge de fer*, the exterior canary yellow, enameled with scrolling peach branches and lotus. Seal marks underfoot.

*Diameter, 6½ inches*

## 258. FOUR DECORATED PORCELAIN BOWLS

*Tao Knang*

Decorated in colors of the *famille verte* and underglaze blue with lotus ponds and flying and swimming ducks, with dragon borders. Seal mark of the reign underfoot.

*Diameter, 6¾ inches*

## 259. PAIR DECORATED PORCELAIN HEXAGONAL JARDINIÈRES

*Tao Knang*

With chrysanthemum and peach branch decoration on a turquoise green ground.

*Height, 6¾ inches*

## 260. TWO PAIRS FAMILLE ROSE BOWLS

*Tao Knang*

Interiors with floral and figure decoration in underglaze cobalt; the exterior with floral decoration and reserves in incised grounds of rose pink and starch blue, respectively. With seal marks of the reign.

*Diameter, 6 inches*

## 261. PAIR DECORATED PORCELAIN FLOWER POTS

*Ch'ien-lung*

Flour white porcelain, decorated in the *rose-verte* enamels with branches of chrysanthemums, peonies, and other blossoms.

*Height, 7 inches*

12- 262. PAIR ROSE-VERTE PORCELAIN JARDINIÈRES *Ch'ien-lung*  
 Decorated with dragons among the clouds in pursuit of the  
 precious jewel. *Height, 7½ inches*

12- 263. PAIR DECORATED PORCELAIN FLOWER POTS *Kuang Hsü*  
 Enameled with a scrolling floral and fruit design on a turquoise  
 green ground, with four circular dragon reserves. *Height, 7½ inches*

12- 264. FOUR DECORATED BOWLS *Ch'ien-lung*  
 Enameled with floral branches in colors on grounds of lettuce  
 green and robin's egg blue. Seal marks underfoot. *Diameter, 7¾ inches*

10- 265. PAIR DECORATED PORCELAIN BOWLS *Tao Kuang*  
 Decorated with scalloped floral medallions surrounded by a  
 border of the *pa an hsien* symbols and flowers, the exterior  
 with scrolling floral design. *Diameter, 8 inches*

Pass 266. PAIR DECORATED PORCELAIN DISHES *Ch'ien-lung*  
 With incised design and enameled floral decoration, on lettuce  
 green and yellow grounds. *Diameter, 8 inches*

Pass 267. DECORATED BROWN VASE SIMULATING BRONZE *Ch'ien-lung*  
 With enameled butterfly design, and band of *ju-i* form lappets  
 in relief around the shoulder; ogre-head loose ring handles.  
 Apocryphal Ch'êng Hua mark. Has stand. *Height, 8 inches*

16- 268. EIGHT DECORATED PORCELAIN DISHES *Ch'ien-lung*  
 Shallow dishes with various *famille rose* floral and figure de-  
 signs. *Diameter, 8 inches*

Pass 269. SIX IMPERIAL YELLOW PORCELAIN BOWLS *Tao Kuang*  
 Shallow bowl invested with a monochrome pale amber yellow  
 glaze. Seal mark of the reign underfoot. *Diameter, 8 inches*

10- 270. TWO JAPANESE GLAZED STONEWARE BOTTLES  
 One gourd-shaped, with tea dust glaze; one conical and of dark  
 color. *Height, 9 inches*

271. PAIR DECORATED PORCELAIN FIGURES OF YOUTHS *Tao Kuang*  
 Standing figure holding a cat and branch of blossoms, in green robe with floral decoration. *Height, 8¼ inches*
272. PAIR DECORATED ROSE PINK BOWLS *Tao Kuang*  
 Enameled in colors and gilding with a scrolling lotus design, flying bats and gold character marks. Seal marks of the reign. *Diameter, 8½ inches*
273. TWO NANKING PORCELAIN DISHES AND A VASE  
 Octagonal blue and white platter, circular green and white dish, *famille rose* baluster-shaped vase. [Lot.]
274. PAIR DECORATED LIME GREEN GINGER JARS WITH COVERS *Tao Kuang*  
 Globular jar enameled in the colors of the *famille rose* with branches of *mei* blossoms, peonies, and chrysanthemums. *Height, 8½ inches*
275. PAIR DECORATED PORCELAIN FLOWER POTS *Tao Kuang*  
 Decorated on a flour white ground with chrysanthemum branches in the enamel colors of the *famille rose*. Seal marks. *Height, 8½ inches*
276. PAIR DECORATED ROBIN'S EGG BLUE GINGER JARS *Tao Kuang*  
 Enameled in the colors of the *famille rose* with floral sprays and butterflies. Teakwood covers. *Height, 8½ inches*
277. PAIR ROSE PINK FIGURES OF HORSES  
 Standing figures, invested with a monochrome rose glaze. Have stands. *Height, 9 inches*
278. PAIR DECORATED PORCELAIN GINGER JARS *Tao Kuang*  
 Decorated with floral branches and medallioned Shou symbols on a turquoise blue ground. Teakwood covers. *Height, 9 inches*

279. TWO JAPANESE PORCELAIN VASES

One gourd-shaped; one bottle-shaped in blue and white and celadon with landscape and figure decoration.

Height, 9 inches

4-

280. FUKIEN PORCELAIN STATUETTE OF KUAN YIN *K'ang-hsi*

Seated figure of the goddess in the *lalita* pose with raised right knee, upon lotus throne; brilliant pale ivory glaze. Has stand.

Height, 9 inches

22<sup>10</sup>

281. FOUR DECORATED PORCELAIN DISHES

Shallow dishes, decorated with figure, landscape, and floral designs in colors.

Diameters, 9½ inches

8-

282. BROWN GLAZED STONEWARE OKIMONO

Two quails on a large fig. Made in Imbe, Province of Bizen. Mark, Teiko, impressed.

Height, 9½ inches

5-

283. PAIR DECORATED MILLET YELLOW JARDINIÈRES *Ch'ien-lung*

Decorated with three circular reserves and floral sprays in the enamel colors of the *famille rose*.

Height, 7½ inches

50-

[See illustration]

284. PAIR IMPERIAL YELLOW PORCELAIN TEMPLE JARS WITH COVERS

*Tao Kuang*

Baluster-form jar with hat cover, invested with a monochrome yellow glaze with subdued lustre, of fine quality.

Height, 14 inches

70-

[See illustration]

285. PAIR DECORATED MAZARINE BLUE GINGER JARS

*Tao Kuang*

Enameled with floral sprays and butterflies in colors on a deep blue ground. Teakwood covers.

Height, 9 inches

35-

286. PAIR FUKIEN PORCELAIN STATUETTES OF KUAN YIN

*K'ang-hsi*

Standing figure in flowing voluminous robes holding a jeweled sceptre across one arm, in ivory white porcelain. Have stands.

Height, 9½ inches

45-



[NUMBERS 283 AND 284]



287. PAIR DECORATED TURQUOISE GREEN VASES *Tao Kuang*  
 Flattened baluster form with blue ogre-head handles, enameled  
 in the *famille rose* colors with scrolling branches of lotus. Seal  
 mark of Ch'ien-lung underfoot. Have stands.

Height,  $9\frac{3}{4}$  inches

288. APPLE GREEN PORCELAIN BOWL AND PAIR AMPHORAS  
 Bowl of K'ang-hsi porcelain, re-glazed, with apocryphal mark  
 of Ch'eng Hua; cracked; with stand; and pair of amphoras,  
 one with lip repaired.

Diameter of bowl, 8 inches; height of amphoras,  $8\frac{1}{4}$  inches

- 288A. PAIR TURQUOISE BLUE FIGURES OF HORSES

Standing figure in shaded turquoise blue, the mane, tail, and  
 hoofs in black. Have stands.

Height, 9 inches

289. PAIR MAZARINE BLUE JARDINIÈRES  
 WITH GILDED DECORATION

*Ch'ien-lung*

Decorated in gold with scrolling blossoms and medallioned  
*fêng huang* birds among the clouds, on a deep blue ground.

Diameter, 10 inches

290. FLAMBÉ POTTERY GLOBULAR JAR, MOUNTED AS LAMP *T'ang*

Invested with a streaked glaze of brown, green and yellow;  
 fitted for electricity, with silk shade.

Height, 23 inches

291. PAIR FAMILLE ROSE OCTAGONAL JARDINIÈRES *Ch'ien-lung*

The panels enameled with figure designs alternating with  
 branches of *mei* blossoms and reeds.

Diameter,  $10\frac{1}{4}$  inches

292. DECORATED PORCELAIN FLOWER BOWL

*Ch'ien-lung*

The interior with robin's egg blue glaze of *peau d'orange* tex-  
 ture, the exterior millet yellow, with incised design and  
 enameled with floral sprays. Has stand.

Diameter, 10 inches

293. PAIR DECORATED CANARY YELLOW PLATES

*Ch'ien-lung*

Glazed canary yellow with incised design, and enameled with  
 a branch of pink camellias.

Diameter,  $10\frac{1}{4}$  inches



294. PAIR FUKIEN PORCELAIN STATUETTES OF KUAN YIN  
*K'ang-hsi*  
 Standing figure upon wave base, holding a sceptre and a basket of fish; in ivory white porcelain. Have stands.  
*Height, 10<sup>1</sup>/<sub>4</sub> inches*
295. POLYCHROMED POTTERY STATUETTE, MOUNTED AS LAMP  
*T'ang*  
 Standing female figure, with traces of polychromy; fitted for electricity, with silk shade.  
*Height, 24 inches*
296. FAMILLE VERTE PORCELAIN OVOID VASE, FITTED AS LAMP  
 Decorated with a female figure and children in landscape. Fitted for electricity, with silk shade. *Height, 26<sup>1</sup>/<sub>2</sub> inches*
297. FAMILLE ROSE JARDINIÈRE  
*Chia Ch'ing*  
 Cylindrical bowl enameled with symbols of the *pa an hsien*, the exterior with figures in terraced landscapes.  
*Diameter, 10<sup>1</sup>/<sub>2</sub> inches*
298. TURQUOISE BLUE QUADRANGULAR JARDINIÈRE  
 WITH RELIEF DECORATION *Ming*  
 The paneled sides with three looped lozenges within petaled borders in relief; coated with a thin greenish blue glaze. Chipped.  
*10<sup>1</sup>/<sub>2</sub> inches square*
299. PAIR DECORATED PORCELAIN HEXAGONAL JARDINIÈRES  
*Tao K'ang*  
 Decorated with small chrysanthemum, fruit and floral medallions on a white ground. With stands. *Diameter, 10<sup>1</sup>/<sub>2</sub> inches*
300. PAIR FAMILLE ROSE HEXAGONAL JARDINIÈRES *Chia Ch'ing*  
 Each panel enameled in delicate colors with ascending branches of chrysanthemum, peony, and prunus blossoms. Have stands.  
*Diameter, 11 inches*
301. LUNG CH'ÜAN CELADON BOWL *Ming*  
 Shallow bowl studded with bosses, on three ogre-head feet; coated with a grayish green glaze. *Diameter, 11 inches*

- 70- 302. PAIR FAMILLE VERTE CYLINDRICAL VASES  
MOUNTED AS LAMPS  
Enameled with perched and flying birds in a flowering landscape; fitted for electricity, with tan brocade shades.  
*Height, 27½ inches*
- 5- 303. CANARY YELLOW GLASS PEACH PLAQUE *Ch'ien-lung*  
Molded with relief decoration of figures, vases of flowers, a rooster, and a dog.  
*Length, 11½ inches*
- 25- 304. PAIR DECORATED PORCELAIN HEXAGONAL JARDINIÈRES *Tao Kuang*  
Decorated on a lapis blue ground with formalized lotus flowers and scrolling leafage. One foot chipped. With stands.  
*Diameter, 10½ inches*
- 10- 305. CELADON PERFORATED JARDINIÈRE *Ming*  
Large bowl perforated in palmette pattern, with hammered brass liner. Repaired.  
*Diameter, 11½ inches*
- Pass 306. PAIR DECORATED LIME GREEN BALUSTER VASES  
WITH COVERS *Chia Ch'ing*  
Pale green incised 'feather' ground with enameled design of exotic birds in landscape. One cover chipped.  
*Height, 11½ inches*
- 15- 307. FUKIEN PORCELAIN STATUETTE OF PU TAI *Ch'ien-lung*  
Laughing figure with bare belly, holding a fly whisk, standing upon a knotted bag; glazed ivory white. *Height, 12 inches*
- 55- 308. PYRIFORM CRACKLE VASE, MOUNTED AS LAMP *Ming*  
With monster-head mock ring handles, and invested with a cream glaze with close *café au lait* crackle; fitted for electricity with batik silk shade and carnelian finial. *Height, 27½ inches*
- 30- 309. TWO BLANC DE CHINE VASES WITH RELIEF DECORATION *Ch'ien-lung*  
One with loose ring, the other with dragon handles; with two deeply recessed medallions modeled in relief with peaches, and branches of peonies and chrysanthemums. *Height, 12 inches*

310. TWO FUKIEN WHITE PORCELAIN STATUETTES OF KUAN YIN  
*K'ang-hsi*  
 Figure with high topknot and voluminous robes, seated upon one leg on rocky base, holding a scroll. Have stands.  
*Heights, 12½ and 13 inches*
311. PAIR THREE-COLOR POTTERY FIGURES OF BODHISATTVA *Ming*  
 Demi-figure in attitude of devotion standing amid the clouds, glazed brown, yellow and green. Have stands.  
*Heights, 12½ and 13 inches*
312. MAZARINE BLUE PORCELAIN FLOWER BOWL *Ch'ien-lung*  
 Invested with a deep monochrome glaze of *peau d'orange* texture. Six-character mark underfoot. Has stand.  
*Diameter, 13 inches*
313. JAPANESE CRACKLED SLATE BLUE VASE  
 Modeled with lizards in relief around the shoulder. Chipped.  
*Height, 14 inches*
314. FAMILLE ROSE OBLONG JARDINIÈRE *Tao Kuang*  
 The sides enameled with figures in landscape, the ends with the *san kuo* fruits; floral borders. Has stand.  
*Length, 13 inches*
315. PAIR TURQUOISE BLUE POTTERY  
 QUADRANGULAR JARDINIÈRES *Ch'ien-lung*  
 Slightly tapering toward the foot and invested with a closely cracked deep turquoise glaze. Have stands.  
*Height, 13¼ inches*



[NUMBERS 316, 317, AND 319]

316. PAIR DECORATED IMPERIAL PORCELAIN BOTTLE-FORM VASE  
*Ch'ien-lun,*

60-

Ovo-cylindrical body enameled with floral scrollings on a rose pink ground and two circular landscape reserves; the tall neck with lotus scrollings in a canary yellow field, and two gold decorated scrolled handles in *rouge de fer*. Underfoot the six-character mark of Ch'ien-lun. *Height, 12 1/4 inches*

[See illustration]

317. IMPERIAL DECORATED ROBIN'S EGG BLUE VASE *Ch'ien-lung*  
Turquoise blue ground enameled in the colors of the *famille rose* with scrolling lotus branches, bats, and symbols; two small scroll handles. Six-character seal mark of Ch'ien-lung underfoot. *Height, 12 inches*

[See illustration]

318. IMPERIAL DECORATED ROBIN'S EGG BLUE VASE *Ch'ien-lung*  
Similar to the preceding. Repaired at lip. *Height, 12 inches*

319. PAIR IMPERIAL DECORATED CANARY YELLOW VASES  
*Chia Ch'ing*

Enameled in the *famille rose* colors on a pale yellow ground with scrollings of lotus interspersed with the Buddhist emblems, and with two bat mock handles; underfoot the six-character seal mark of the reign. *Height, 9½ inches*

[See illustration]

320. PAIR FAMILLE ROSE PORCELAIN VASES, MOUNTED AS LAMPS  
Ovoid vase on bold foot, enameled on a flour white ground with floral branches; fitted for electricity, with pleated silk shades. *Height, 28 inches*

321. IMPERIAL DECORATED ROBIN'S EGG BLUE BOTTLE  
*Tao Kuang*

Enameled in the *famille rose* colors on a turquoise ground with lotus scrolls and bats, with gold character marks. Seal mark of the reign underfoot. *Height, 13 inches*

322. PAIR CORAL RED PORCELAIN HEXAGONAL VASES *Chia Ch'ing*  
Baluster-form, with two fret-scrolled handles, decorated in gold with writhing fiery dragons, flowers and Shou emblems upon a coral glaze. *Height, 13¼ inches*

323. DECORATED GREEN PORCELAIN ROSE BOWL *Ch'ien-lung*  
Enameled in the *famille rose* colors with floral sprigs in an incised ground, and with a star-shaped reserve of children playing; with flat rim. *Diameter, 13½ inches*



- 20- 324. BLANC DE CHINE STATUETTE OF KUAN YIN *K'ang-hsi*  
 Standing figure in flowing robes, her fingers in a *mudra*, on scroll base; coated with a flour white glaze. Has stand.  
*Height, 13½ inches*
- 8- 325. PAIR FAMILLE ROSE PORCELAIN VASES *Tao Kuang*  
 Club-shaped; decorated with swallows, partridges, willow trees, and prunus branches.  
*Height, 14 inches*
- 25- 326. PAIR THREE-COLOR POTTERY FIGURES OF BODHISATTVA *Ming*  
 Crowned demi-figure in attitude of worship, standing among the clouds, glazed green, brown, and aubergine. Have stands.  
*Height, 13½ inches*
- 10- 327. THREE-COLOR NANKING PORCELAIN BOWL *Ming*  
 Sketched in blue, green, and *ronge de fer* with dragons, birds, and sprays of flowers.  
*Diameter, 13½ inches*
- 12<sup>1/2</sup> 328. GLAZED POTTERY FIGURE OF A SEATED BUDDHA *Ming*  
 Figure in voluminous robes, seated cross-legged on lotus throne, glazed in two shades of brown with touches of green.  
*Height, 13½ inches*
- 30- 329. CELADON DOUBLE-GOURD VASE, MOUNTED AS LAMP  
 Moss green glaze with wide crackle; fitted for electricity, with silk shade, and carved jade finial.  
*Height, 28½ inches*
- 15- 330. DECORATED PORCELAIN BOWL *Tao Kuang*  
 Enameled in colors of the *famille rose* on white with *fêng huang* birds, butterflies, and floral branches.  
*Diameter, 14½ inches*
- 30- 331. PAIR MAZARINE BLUE TEMPLE JARS WITH COVERS *Yung Chêng*  
 With two animal-head handles, and invested with a monochrome purplish blue glaze. Have stands. *Height, 14 inches*

## 332. PAIR THREE-COLOR POTTERY FIGURES OF BODHISATTVA

*Ming*

Crowned demi-figure in attitude of devotion standing amid the clouds, glazed green, yellow, and brown. Have stands. One neck repaired. *Height, 16½ inches*

333. FAMILLE ROSE QUADRILATERAL VASE *Chia Ch'ing*

With two animal-head mock ring handles, and decorated with figures in pavilions and mountain landscapes.

*Height, 14½ inches*334. PAIR GLAZED POTTERY FIGURES OF ACOLYTES *Ming*

Standing figure in voluminous turquoise blue robes, on cloud base and oblong plinth. Have stands. *Height, 14½ inches*

335. LUNG CH'ÜAN CELADON VASE, FITTED AS LAMP *Ming*

With bold incised floral decoration under the glaze; with green batik silk shade and spinach jade finial. Fitted for electricity. Cracked. *Height, 32 inches*

336. PAIR THREE-COLOR POTTERY EQUESTRIAN GROUPS *Ming*

Bellicose figures, one in armor, on galloping horses, with tile bases; glazed green and yellow, with touches of aubergine. Tails missing. Have stands. *Heights, 13½ and 15½ inches*

337. Tz'U CHOU CRACKLED PLAQUE *Ming*

Decorated in brown and sepia with a rude figure in a landscape, the border with cloud scrolls. *Diameter, 14¾ inches*

338. PAIR CRACKLED YELLOW PORCELAIN VASES  
MOUNTED AS LAMPS

Tall vase coated with a millet yellow glaze, with irregular crackle; fitted for electricity, with silk shade.

*Height, 32½ inches*339. BLANC DE CHINE STATUETTE OF THE  
THOUSAND-ARMED KUAN YIN *K'ang-hsi*

Figure in the attitude of devotion seated on a lotus throne, each arm holding a precious symbol; octagonal plinth. In flour white porcelain. *Height, 15 inches*



- 15- 340. NANKING PORCELAIN BOWL Ming  
*Cavetto* and four reserves sketched in turquoise blue with figures, pagodas, and pine landscape; and with four seal marks in iron red. Diameter, 15½ inches
- 28- 341. PAIR THREE-COLOR POTTERY EQUESTRIAN GROUPS Ming  
 Armored figures, one mounted on a galloping, the other on a standing horse, on tile bases; glazed green, yellow, and brown. Have stands. Height, 16 inches
- 10- 341A. FAMILLE ROSE FISH BOWL  
 Enameled with flowering shrubs of the Seasons and embossed with two *Fu*-dog masks; interior decorated with lotus and swimming fish. Height, 19 inches; diameter, 23½ inches
- 52<sup>10</sup> 342. SANG DE BOEUF HEXAGONAL VASE, MOUNTED AS LAMP  
 Baluster vase, coated with a streaked *sang de boeuf* glaze; fitted for electricity, with shade. Carnelian finial. Height, 41½ inches
- 9- 343. TWO THREE-COLOR POTTERY DRAGON PANELS Ming  
 The paste carved in high relief with writhing four-clawed dragons amid clouds, glazed in turquoise blue, aubergine, and brownish yellow. Height, 24½ inches; width, 12½ inches  
Height, 21¾ inches; width, 11¾ inches
- 15- 344. BLANC DE CHINE STATUETTE OF KUAN YIN Ch'ien-lung  
 Standing figure in hooded flowing robes, holding a basket of fish, on lotus base. Height, 20 inches
- 40- 345. PAIR POWDER BLUE TEMPLE JARS Yung Chêng  
 Baluster form, invested with a speckled deep powder blue glaze. Teakwood hat covers and stands. Height, 17½ inches
- 60- 346. PAIR THREE-COLOR POTTERY STATUETTES Ming  
 Standing figure in flowing robes with voluminous sleeves, holding a jar; glazed green, brown, and yellow; tile base. Have stands. Height, 19 inches

346A. PAIR FAMILLE ROSE OCTAGONAL TEMPLE VASES  
WITH COVERS

10- All over floral pattern on a gilded ground, and reserves of flowers and figures; hat covers surmounted by gilded *kylin*.

Height, 36½ inches

SEMI-PRECIOUS MINERALS, LAMPS  
AND IVORY CARVINGS

347. CARVED IVORY ORNAMENT

2- Rooster and hen perched upon the side of an upturned basket, entwined with asters.

Height, 5 inches

348. CARVED FELT-S'UI JADE SNUFF BOTTLE

0- Ovoid, with carved coral stopper. (Private Owner)

349. CARVED MALACHITE COVERED BOX

7- In deep streaked emerald green stone, the cover carved with a bird perched upon a peony branch. Has stand.

Length, 4¼ inches

350. JAPANESE CARVED IVORY GROUP

17- Two coolies, one holding a basket of eggs which the other is testing. Signed.

Height, 5 inches

351. CARVED PURPLE AGATE COVERED BOX

70- Oblong box, the cover carved with a perched bird upon a peony branch. Has stand.

Length, 5 inches

352. JADE THUMB RING AND ARMLET, MOUNTED IN GOLD

15- Polished amulets in deep mottled green and black jade, lined in gold. [Lot.]

353. CARVED CARNELIAN CARP VASE

12- In the form of a carp surrounded by water plants, a saurian, and a *kylin*, on wave base. Has stand.

Height, 4½ inches

354. FEI-TS'UI-JADE BOX WITH COVER

Oblong box, the cover with carved brocade ball as finial; with mottled markings of shaded green. Has stand.

Length,  $4\frac{1}{4}$  inches

355. PAIR CARVED FEI-TS'UI JADE FIGURES OF HORSES

Standing figures of saddled horses, in camphor jade with brilliant emerald markings. Have stands.

Length, 5 inches

356. CARVED CARNELIAN PEACH COUPE

The exterior carved with large lotus leaves, up which three frogs are clambering; in shaded carnelian with brilliant polish. Has stand.

Length, 5 inches

357. CARVED FEI-TS'UI JADE BOX WITH COVER

Oblong with incurved corners, the cover carved in low relief with perched song birds upon a peony branch. Has stand.

Length, 5 inches

358. PAIR CARVED FEI-TS'UI JADE PHOENIX GROUPS

Two carunculated birds standing on rockery, their long tails curled gracefully upward; in mottled grayish green jade. Have stands.

Height, 7 inches

[See illustration]

359. CARVED GREEN JADE INCENSE BURNER WITH COVER

Tripod *koro* with animal heads at the knees, and carved with *’ao ’ieh* ornament with *kylin* head loose ring handles, and masks upon the cover, surmounted by a saurian; in mottled crystalline green jade. Has stand.

Height,  $6\frac{3}{4}$  inches

[See illustration]

360. PAIR FEI-TS'UI JADE VASES WITH COVERS

Quadrilateral bronze-form vase, carved with cusped *’ao ’ieh* strapwork, and about the neck with a collar of plantain leaves, and with two *kylin* head loose ring handles; cover surmounted by a snarling *shì tzu*. In polished camphor jade with rich green and black markings. Have stands.

Height, 9 inches

[See illustration]



[NUMBERS 358-361]

## 361. CARVED MUTTON-FAT JADE MARINE GROUP

Figures of two fish swimming amid lotus flowers and leafage, carved in undercut relief; polished greenish white jade. Has stand. *Length, 12 inches*

[See illustration]

## 362. CARVED IVORY PUZZLE BALL WITH STAND

Half-draped figure, supporting a bowl; the sphere intricately carved with dragons amid clouds and containing twelve reticulated interior globes. *Diameter, 3 inches*

## 363. CARVED SPINACH JADE BOX WITH COVER

Oblong box, the cover carved with a song bird perched upon a peony branch. Has stand. *Length, 5 inches*

364. CARVED CARNELIAN VASE WITH COVER

Carved in high relief with squirrels clambering upon vine branches, the cover with a saurian; in brownish red polished carnelian. Has stand. *Height, 5 inches*

20-

365. CARVED GREEN AVENTURINE LEAF DISH

Triangular leaf-form dish carved with a leafy branch. Has stand. *Length, 5½ inches*

12<sup>00</sup>

366. TWO YELLOW JADE BOXES WITH COVERS

Oblong, one carved with an exotic bird perched upon a flowering branch. Have stands. *Lengths, 4¾ and 5 inches*

40-

367. CARVED FEI-TS'UI JADE KORO WITH COVER

Quadrangular, carved with the *l'ao l'ieh* ogre, with *kylin* loose ring handles, the cover surmounted by a guardian animal. Has stand. *Height, 5¼ inches*

17<sup>00</sup>

368. CARVED BROWN AGATE COUPE

Shallow coupe surrounded by a branch of *mei* blossoms and leaves; in mottled tobacco brown agate. Has stand.

*Length, 5½ inches*

12<sup>00</sup>

369. CARVED AND POLYCHROMED IVORY STATUETTE OF KUAN YIN

Figure seated on one leg, in voluminous robes and holding a sceptre; enriched with polychromy. Has stand.

*Height, 6¾ inches*

37<sup>00</sup>

370. CARVED GREEN JADE COVERED VASE

Slender baluster vase with cover, entwined with undercut leafy branches, to which the cover is attached by a jade chain, the base with perched bird figures. Has stand. *Height, 5¼ inches*

20-

371. CARVED MOSS JADE PEACH COUPE

In the form of a flat peach with wide mouth, the exterior modeled with a branch of leafage. Has stand.

*Length, 5½ inches*

17<sup>00</sup>





372

373

374



375

376

375

[NUMBERS 372-376]

## 372. CARVED CARNELIAN VASE WITH COVER

Globular vase with beehive cover, carved in high and undercut relief with *fêng huang* birds standing by flowering peony branches, and a youth holding a small branch. Has stand.

Height, 7 inches

[See illustration]

373. CARVED GRAY AGATE OCTAGONAL VASE WITH COVER

The sides paneled and carved in low relief with *fêng huang* birds and branches of *mei* blossoms, the neck with four ogre-head loose ring handles; the cover with *shi-tzu* finial. Has stand. *Height, 9 ¼ inches*

20-

[See illustration on preceding page]

374. CARVED CARNELIAN COVERED VASE

Carved with birds flying above blossoming branches, the sides with two *fêng huang* birds in high relief, the cover with a crouching bird holding a peony branch in its mouth. Has stand. *Height, 5 ½ inches*

35-

[See illustration on preceding page]

375. PAIR CARVED LAPIS LAZULI VASES WITH COVERS

Tapering quadrangular vases, carved in high relief with dragons in pursuit of the precious jewel, *kylin*, and with loose ring handles and *shi-tzu* finials; in shaded gray and blue lapis. Have stands. *Height, 7 ½ inches*

70-

[See illustration on preceding page]

376. CARVED LAPIS LAZULI VASE

Hollow trunk carved in high and undercut relief with song birds perched upon *mei* branches; in closely mottled deep blue lapis. Has stand. *Height, 5 ¼ inches*

7-

[See illustration on preceding page]

377. CARVED FEI-TS'UI JADE BOX WITH COVER

The cover carved with a branch of peonies in relief; in pale gray jade with rich mottled kingfisher green markings. Has stand. *Length, 4 ½ inches*

25-

378. PAIR CARVED FEI-TS'UI JADE FIGURES OF BIRDS

With folded wings, perched upon fret-carved rockery; in camphor jade deepening at the head to a mottled kingfisher green. Have stands. *Height, 5 ½ inches*

50-



## 379. TWO CARVED YELLOW JADE LOTUS DISHES

With curled edges, one carved with a lotus branch, shells and a frog; in greenish yellow jade. Butterfly stand.

*Length, 5½ and 5¾ inches*

## 380. CARVED CAMPHOR JADE LOTUS DISH

In the form of a curled-up lotus leaf with pods, in translucent streaky white glaze. Carved stand. *Length, 5½ inches*

## 381. CARVED SPINACH JADE GROUP

In the form of a lotus blossom, entwined with undercut stems of leafage and flowers, with figures of perched birds. Has stand. *Width, 5¾ inches*

## 382. CARVED SMOKY AGATE TEAPOT WITH COVER

Globular body on three short legs, with straight spout and bamboo handle, the body carved with dragons, the shoulder and cover with fluted lappets. *Height, 6 inches*

## 383. CARVED ROSE QUARTZ BIRD FIGURE, FITTED AS LAMP

Figure of a *fêng huang* with upcurled tail, fitted for electricity; shell pink silk shade. *Height, 19½ inches*

## 384. CARVED LAPIS LAZULI VASE WITH COVER

Flattened bronze-form vase with two *t'ao t'ieh* handles, carved in high relief with *kylin* among trailing weeds; *kylin* finial. Has stand. *Height, 6 inches*

## 385. CARVED FELT-S'UI JADE STATUETTE, MOUNTED AS LAMP

Female figure holding a fly whisk, in grayish green jade; fitted for electricity, with batik silk shade. *Height, 22 inches*

## 386. PAIR CARVED GREEN SOAPSTONE FIGURES OF SQUIRRELS

Figure with bushy tail, seated on its haunches, its forepaws lifted to its mouth; oblong base. *Height, 6 inches*

## 387. CARVED CHALCEDONY AGATE COUPE

Irregular oval coupe, carved in high and undercut relief with pine trees and perched exotic birds; in bluish gray chalcedony with milk white areas. Has stand. *Height, 6 inches*

- 272  
388. CARVED AND POLYCHROMED IVORY STATUETTE OF KUAN YIN  
Seated figure with crossed legs, the right hand resting upon one raised knee; enriched with a polychromed floral design. Chipped. Has stand. *Height, 8¼ inches*

- 32<sup>v2</sup>  
389. CARVED ROSE QUARTZ KORO WITH COVER  
Circular bowl with massive ogre-head loose ring handles, on three short animalistic paw feet, the body carved with formalized archaic *l'ao l'ieh* ornament; tall cover with undercut peony branches, and fluted mushroom finial. Has stand. *Height, 8½ inches*

[See illustration]

- 50-  
390. CARVED ROSE QUARTZ VASE WITH COVER  
Tall bronze-form vase with two ogre-head fret handles, and cover with peony finial; carved in low relief with *l'ao l'ieh* ornament; in shaded pale pink quartz. Has stand. *Height, 11½ inches*

[See illustration]

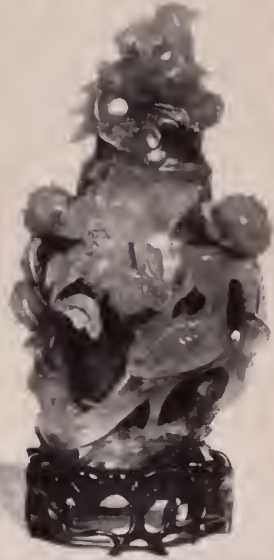
- 60-  
391. CARVED ROSE QUARTZ VASE WITH COVER  
Flattened vase with domed cover, carved in high and undercut relief with a guardian animal, and *fêng huang* birds holding peony branches in their mouths, the sides with large peonies. Has stand. *Height, 12 inches*

[See illustration]

- 200-  
392. PAIR SPINACH JADE TRANSLUCENT BOWLS  
Transparent jade of richly streaked spinach green, engraved underfoot with the mark of Ch'ien-lung. Have stands. *Diameter, 7¾ inches*

[See illustration]

- 10-  
393. CARVED AMETHYSTINE QUARTZ TRIPOD CENSER WITH COVER  
Globular, with two *kylin*-mask handles, on three stump feet, the cover with *shih-tzu* finial. Has stand. *Height, 6¼ inches*



[389]

[390]

[391]

ABOVE: NUMBER 392

- 70- 394. CARVED ROSE QUARTZ FIGURE OF AN ELEPHANT  
MOUNTED AS LAMP  
Standing figure in polished rose quartz, and fitted for electricity; pink satin shade. *Height, 17 inches*
- 20- 395. CARVED SPINACH JADE LEAF DISH  
Cordate leaf form, the edge carved in low relief with flowering branches and leaves. Has stand. *Length, 6½ inches*
- 22<sup>12</sup> 396. CARVED JADE LOTUS COUPE WITH COVER  
Finely carved in the form of a large pod with seeds, in undercut leafage and blossoms, the tiny cover with bird finial; in old greenish gray jade. Has stand. *Length, 6½ inches*
- 30- 397. PAIR CARVED SPINACH JADE COVERED VASES  
Flattened pear-shaped vases carved in flat relief with nymphs in a grove; with two *kylin* head loose ring handles, and cover with *shi-tzu* finial. With stands. *Height, 6½ inches*
- 30- 398. PAIR CARVED ROSE QUARTZ FIGURES OF FU-DOGS  
Ferocious figure seated upon its haunches, in delicate rose pink quartz. *Height, 6½ inches*
- 20- 399. PAIR MALACHIITE-GREEN STONE PHOENIXES  
Long-tailed carunculated bird, one raised paw resting on rockery. *Height, 6¾ inches*
- 100- 400. TWO CARVED CORAL FIGURES OF MEI JÊN  
Slender female figures in flowing robes, one bearing a flowering rose branch, the other a tall vase of flowers. Have stands. *Heights, 6 and 7 inches*
- 57<sup>12</sup> 401. CARVED YELLOW JADE GROUP, MOUNTED AS LAMP  
Bronze-form vase, carved with *fêng huang* birds and peon branches, beside which stands a female figure with fly whisk. Fitted for electricity, with shade. *Height, 17 inches*

02. TWO CARVED AMETHYSTINE QUARTZ VASES WITH COVERS  
Carved in high and undercut relief with *fêng huang* birds, a large peach, and a lady with a small boy amid flowering peonies, the covers with frog and bird. Have stands.  
*Heights, 6¼ and 7¼ inches*
03. CARVED MALACHITE FU-DOG GROUP  
Crouching figure of a *Fu*-dog, the brocade ball between its fore-paws, and a branch of *ling chih* in its mouth, its cub at its side. Has stand.  
*Length, 7 inches*
04. PAIR CARVED GRAY AGATE VASES, FITTED AS LAMPS  
Incised with floral design and ornamented with fifteen ogre-head loose rings, in smoky gray agate. Fitted for electricity, with satin shades.  
*Height, 21½ inches*
05. PAIR CARVED MALACHITE VASES WITH COVERS  
Round tapering bronze-form vase, carved with a collar of fretted plantain leaves, with four animal masks at the shoulders, the cover with plantain lappets. Have stands.  
*Height, 7 inches*
06. PAIR CARVED SPINACH JADE ANIMAL FIGURINES  
Squatting figures of antlered deer holding stems of *ling chih* fungus in their mouths; one antler repaired. Have stands.  
*Height, 7 inches*
07. CARVED CARNELIAN VASE WITH COVER  
Irregular form, carved in high relief with blossoming peony branches and a writhing dragon, the cover with a *fêng huang* bird. Has stand.  
*Height, 7 inches*
08. CARVED IVORY STATUETTE OF KUAN YIN  
Standing figure upon lotus base, holding a basket of peonies, three song birds perched upon her arms and robe.  
*Height, 9½ inches*
09. CARVED FEI-TS'UI JADE LOTUS DISH  
Irregular flat dish with curled edge, carved with lotus buds and a dragonfly. Has stand.  
*Length, 7 inches*





[410]

[411]

[412]

[411]

[410]

410. PAIR CARVED FEI-TS'UI JADE FIGURES OF PARROTS

Figure with folded wings and beautifully imbricated plumage perched upon a gnarled tree stump, to which it is attached by a long cord fastened to one leg. In camphor jade with emerald markings. Have stands. *Height, 15 inches*

750-

[See illustration]

411. PAIR CARVED FEI-TS'UI JADE FIGURES OF KUAN YIN

Standing figure as the symbol of Motherhood, with high top-knot and flowing robes, holding a peony blossom in one hand, a small youth in the attitude of devotion standing at her feet; in brilliant celadon jade. Have stands. *Height, 14 inches*

460-

[See illustration]

412. CARVED FEI-TS'UI JADE BRONZE-FORM VASE WITH COVER

With two ogre-head loose ring handles, the body carved with an archaic design of formalized *l'ao l'ieh* fret and cloud scrolls, the neck with plantain lappets, the cover with two *kylin affrontés* centring the precious ball. Has stand. *Height, 15 1/4 inches*

150-

[See illustration]

## 413. PAIR PIETRA DURA TABLE SCREENS

Oblong milk white glass plaque decorated with an applied design in semi-precious stones of blossoming aster shrubs with hovering butterflies. In carved wood frames and stands.

*Plaque: Height, 7½ inches; width, 5 inches*

## 414. CARVED SMOKY AGATE OVAL COUPE

Carved with a *chih lung* holding a fungus branch in its mouth; in translucent gray agate.

*Length, 7½ inches*

415. PAIR CARVED GREEN JADE PHOENIXES  
ON ROSE QUARTZ STANDS

Long-tailed *fêng-huang* in *fei-ts'ui* jade mottled with black; on rose quartz stands.

*Total height, 7½ inches*

## 416. PAIR CARVED IVORY FIGURES OF PHOENIXES

Standing figure with long tail, on rocky base from which a peony branch rises. Have stands.

*Height, 9½ inches*

417. TWO CARVED YELLOW SOAPSTONE STATUETTES  
MOUNTED AS LAMPS

Standing female figures, one holding a branch of lotus with buds, the other a vase of *ling chih*; fitted for electricity, with shades.

*Height, 20½ inches*

## 418. CARVED SPINACH JADE LEAF COUPE

In the form of a lotus leaf with curled edges, the exterior carved with a scrolling branch of lotus buds and a pod, and a flying bat. Has stand.

*Length, 7½ inches*

419. CARVED AND POLYCHROMED IVORY STATUETTE  
OF A MEI JÊN

Standing female figure in flowing robes, holding a twig with a perched bird; enriched with polychromy. Has stand.

*Height, 11 inches*



420. CARVED ROSE QUARTZ VASE WITH COVER

15- Bronze-form beaker with loose ring handle, carved with archaic *t'ao t'ieh* ornament and plantain leaves, the cover with strap handle. Has stand. *Height, 7¾ inches*

421. CARVED CORAL FIGURE OF A MEI JÊN

40- Attenuated female figure in girdled flowing robes, holding above her head a rose branch; in brilliant pink coral, with scattered white markings, and soft polish. Has stand. *Height, 8 inches*

422. CARVED FEI-TS'UI JADE FIGURE OF KUAN YIN

42<sup>10</sup> Standing figure in high topknot and flowing robes, in deep green jade with soft finish. Has stand. *Height, 8 inches*

423. PAIR CARVED GRAY AGATE FIGURES OF PHOENIXES

50- Standing figure with long curled tail, one raised paw upon a rocky stump; in shaded smoke gray agate, with brown markings. Have stands. *Height, 8½ inches*

424. CARVED FEI-TS'UI JADE STAND

12<sup>10</sup> Oblong, the ends turned in a square fret and supported on trestle forms. In mottled pale green jade with delicate mauve areas. *Length, 8½ inches*

425. CARVED AND POLYCHROMED IVORY STATUETTE OF A MEI JÊN

32<sup>10</sup> Standing female figure with flowing robes, holding a peony branch; the robe with flower and butterfly decoration in colors. *Height, 13 inches*

426. CARVED ROSE QUARTZ STATUETTE OF KUAN YIN MOUNTED AS LAMP

27<sup>10</sup> Standing figure holding the vase of healing, fitted for electricity; with damask shade. *Height, 20½ inches*

427. CARVED ROSE QUARTZ VASE WITH COVER

17<sup>10</sup> Carved in high relief with exotic birds among flowering lotus branches, the cover with a perched bird. Has stand. *Height, 9 inches*



[428]

[429]

[428]

## 428. PAIR CARVED GRAY AGATE STATUETTES OF PHOENIXES

Tall *fêng-huang* bird with folded wings and long curled tail, in shaded dove gray agate. One repaired. Have stands.

Height, 15½ inches

[See illustration]

## 429. CARVED PURPLE AGATE BRONZE-FORM VASE WITH COVER

Flattened vase, with two ogre-head loose ring handles, and carved with archaic *Pao P'ieh* and fret ornament, the base with a band of chrysanthemum petals; cover with *shì-tzu* finial. Repaired. Has stand.

Height, 16½ inches

[See illustration]

430. CARVED FEI-TS'UI JADE LOTUS DISH

In the form of a lotus leaf with curled edge, the exterior carved in relief with a large lotus branch of blossoms, a bud, and a pod. Has stand. *Length, 9 inches*

431. CARVED FLUORITE VASE WITH COVER

Flattened vase carved at the sides with ascending peony branches and perched birds, the cover with an undercut peony branch. Has stand. *Height, 9 inches*

432. CARVED AND POLYCHROMED IVORY STATUETTE

Tall slender female figure holding a sceptre and a basket of flowers, enriched with polychromy. *Height, 14½ inches*

433. CARVED GREEN AVENTURINE STATUETTE OF KUAN YIN  
FITTED AS LAMP

Standing figure holding a basket of fish; fitted for electricity, with green satin shade. *Height, 20½ inches*

434. PAIR CARVED FEI-TS'UI JADE BRONZE-FORM VASES  
WITH COVERS

Flattened vase carved with a central band of fret ornament, the base and neck with plantain lappets; with two *shi tzu* head loose ring handles, the cover with *Fu*-dog finial in relief. Have stands. *Height, 9½ inches*

434A. PAIR CARVED FLUORITE FIGURES OF FU-DOGS

Male and female animals seated upon their haunches, with ball and cub, on oblong plinths; in shaded bluish green and amethystine quartz. Have stands. *Height, 9 inches*

435. CARVED CARNELIAN VASE WITH COVER

Bronze-form vase carved in high and undercut relief with a *fêng huang* beside a rose branch, and a writhing dragon, the cover with two exotic birds beside a huge rose. Has stand. *Height, 9 inches*



[NUMBER 436]

436. VERY IMPORTANT CARVED WHITE JADE COVERED VASE  
WITH STAND *Imperial Ch'ien-lung*

1250-  
Round tapering vase with flat shoulder and short neck, surmounted by a domed cover; the cover and sides carved in low relief with *pao p'ieh* fret motives upon a horizontal band with pointed lappets, the sides and cover with undercut carving of dragon scrollings; at the shoulder are two phoenix-head loose ring handles. The circular stand similarly carved with *pao p'ieh* fret, and standing on three valanced feet. In beautiful translucent white jade, with soft polish. Height, 11½ inches

[See illustration]

437. CARVED ROSE QUARTZ FIGURE OF KUAN YIN

170  
Standing figure in high topknot and flowing robes, holding an overturned vase in her hand. Has stand. *Height, 10 inches*

438. TWO CARVED BONE ELEPHANT ORNAMENTS

25-  
One carved with a pyramid of five elephants, the other a procession of elephants. One with stand.

*Lengths, 14 and 16½ inches*

439. PAIR CARVED ROSE QUARTZ BRONZE-FORM VASES  
MOUNTED AS LAMPS

45-  
Flattened quadrilateral vase with floral and fret carving; fitted for electricity, with silk shades and amethystine quartz finials.

*Height, 21 inches*

440. CARVED LAPIS LAZULI GROUP

130-  
Figure of a young woman with high topknot standing by a fruiting peach tree with a perched bird; in mottled gray and blue lapis. Has stand.

*Height, 10 inches*

441. PAIR CARVED FLUORITE VASES WITH COVERS

30-  
Carved with bold ascending peony branches with perched birds at the foot, the cover with two birds and a peony; in shaded bluish green quartz, with amethyst areas. Have stands.

*Height, 10 inches*

442. PAIR CARVED GRAY AGATE VASES WITH COVERS

60-  
Bronze-form vase, with two ogre head loose ring handles, the body carved in low relief with archaic *t'ao t'ieh* forms, the shoulder and cover with plantain leaves, and *kylin* finial; in deep smoky agate. Have stands.

*Height, 10 inches*

443. CARVED TURQUOISE MATRIX DRAGON VASE, FITTED AS LAMP

40-  
Bronze-form vase carved in high and undercut relief with writhing dragons, *kylin* and a figure of a child; fitted for electricity, with silk shade, and rose quartz bird finial.

*Height, 32 inches*

[See illustration]



[443]

[444]

[445]

444. PAIR CARVED YELLOW JADE FIGURES OF MEI JÊN  
FITTED AS LAMPS

Standing female figure holding a lotus bud, in translucent greenish yellow jade. Fitted for electricity, with fringed silk shade. Amethyst finials.

*Height, 23½ inches*

[See illustration]

445. CARVED ROSE QUARTZ COVERED VASE, MOUNTED AS LAMP

Ovoid vase carved in undercut relief with *fêng huang* birds, a coiled dragon and lotus branches; dragon finial. Fitted for electricity, with rose batik silk shade and amethystine quartz bird finial.

*Height, 29 inches*

[See illustration]

446. CARVED JADE FIGURE OF KUAN-YIN ON SPINACH JADE STAND

Standing figure in flowing robes, and holding a scroll, in greenish gray jade; the stand carved with rockery.

*Total height, 10¼ inches*



- 30- 447. CARVED AMETHYSTINE QUARTZ VASE, MOUNTED AS LAMP  
Carved with a *fêng huang* bird and peony branches, in opaque shaded purple quartz; fitted for electricity, with satin shade and turquoise finial. *Height, 21 inches*

- 60- 448. PAIR CARVED SPINACH JADE BRONZE-FORM VASES  
WITH COVERS  
Carved with bands of plantain leaves, with fretwork below the shoulder, and two monster-head loose ring handles, the cover with a *kylin* finial in relief. In deep green jade. Have stands. *Height, 11 inches*

- 45- 449. CARVED SPINACH JADE BIRD STATUETTE  
Figure of a *fêng huang* bird with long curled tail and uplifted claw, in polished dark green jade. With stand. *Height, 12 1/4 inches*

- 35- 450. CARVED MAUVE AGATE BRONZE-FORM VASE  
MOUNTED AS LAMP  
Quadri-lateral, with two monster-head loose ring handles, carved with fret ornament and with *kylin* finial. Fitted for electricity, with satin shade and turquoise finial. *Height, 23 inches*

- 60- 451. PAIR CARVED FEL-TS'UI JADE TABLE SCREENS  
Oblong plaques carved on both faces in low relief with fruiting and blossoming trees, and perched and flying birds; in soft white jade, with brilliant emerald green mottled markings. In carved wood stands. *Height, 12 inches; width, 9 inches*

- 90- 452. PAIR CARVED SPINACH JADE BIRD STATUETTES  
Archaistic tall figure of a long tailed *fêng huang*, in mottled dark green jade. One has small restoration. Have stands. *Height, 13 3/4 inches*

- 35- 453. GREEN BRONZE TWO-HANDLED VASE, FITTED AS LAMP  
Pyriform, with ogre-head loop handles; with silk shade and bird finial. Fitted for electricity. *Height, 23 1/2 inches*

454. GREEN BRONZE GLOBULAR JAR, MOUNTED AS LAMP  
 Modeled with bands of *Pao P'ieh*, fret and diaper ornament, and with six loose ring handles. Fitted for electricity, with silk shade and bird finial. *Height, 28 inches*

### ANTIQUÉ CHINESE RUGS

455. PAIR CHINESE MEDALLION RUGS  
 Amber brown field woven with floral medallion and branches, and flying butterflies; rose border of emblems.  
*Length, 4 feet 7 inches; width, 2 feet 4 inches*

456. CHINESE MEDALLION RUG *Ch'ien-hung*  
 Pale rose field exhibiting butterflies, floral branches, and a quincunx of lotus medallions; mustard yellow floral border.  
*Length, 6 feet 7 inches; width, 5 feet 2 inches*

457. CHINESE MEDALLION RUG  
 Amber brown field with floral medallion surrounded by scrolling branches and flying butterflies, and four smaller medallions.  
*Length, 7 feet 2 inches; width, 5 feet 3 inches*

458. CHINESE EMBLEM RUG *Ch'ien-hung*  
 Terra cotta field, woven with a symmetrical design of blue Shou medallions enclosed by tan and brown flying bats, alternating with endless knots (*chang*); yellow floral border.  
*Length, 7 feet 10 inches; width, 5 feet 2 inches*

459. CHINESE RUG  
 Amber brown field woven with deities, animals and symbols on an amber brown ground, the border with waves, *kylin*, dragons and the Eight Buddhist Emblems.  
*Length, 7 feet 2 inches; width, 6 feet 3 inches*

460. CHINESE FLORAL RUG *Ch'ien-hung*  
 Brick red field, woven in yellow and blue with formalized lotus branches; sapphire blue fret and floral borders.  
*Length, 8 feet; width, 5 feet 3 inches*

461. CHINESE FLORAL RUG

Amber brown field developing floral and fret medallions and spandrels, vases of flowers and flying butterflies; floral border.

*Length, 8 feet; width, 5 feet 3 inches*

35-

462. CHINESE FLORAL RUG

Tobacco brown field developing blue branches of peonies in yellow and ecru, and flying butterflies; floral border. Damaged.

*Length, 8 feet; width, 5 feet 3 inches*

35-

463. CHINESE PEONY RUG

Amber brown field, woven with peony branches in blue, rose, yellow, and ecru; swastika fret and rosette borders.

*Length, 8 feet; width, 5 feet 3 inches*

32<sup>1/2</sup>

464. CHINESE LOTUS RUG

Mustard yellow field, woven with a bold scrolling design in blue and rose of lotus branches; blue floral and Shou medallion border.

*Length, 8 feet; width, 5 feet 3 inches*

32<sup>1/2</sup>

465. CHINESE FLORAL RUG

Brick-red field, with formalized medallion design of blue branches bearing yellow and ecru peonies, and flying butterflies sapphire blue floral and fret borders.

*Length, 8 feet 1 inch; width, 5 feet 3 inches.*

30-

466. CHINESE PEONY RUG

Rose field with a medallion, spandrels, and scattered branches of peonies and flying butterflies, in blue, fawn, and yellow.

*Length, 8 feet 1 inch; width, 5 feet 3 inches.*

30-

## 467. CHINESE MEDALLION RUG

Amber brown field with a blue rosetted lattice enclosing bats and butterflies, the medallion and spandrels with formalized dragons in sapphire blue; floral border.

*Length, 8 feet 2 inches; width, 5 feet 2 inches*

## 468. CHINESE MEDALLION RUG

Salmon pink field, woven with scattered sprays of flowers, two vases of blossoms and five medallions, in blue, yellow, and ecru; tan floral border.

*Length, 8 feet 2 inches; width, 5 feet 3 inches*

## 469. CHINESE MEDALLION RUG

Mustard brown field woven with a quincunx of lotus and fret medallions, vases of flowers, and floral spandrels; rose floral border.

*Length, 8 feet 3 inches; width, 5 feet 2 inches*

## 470. CHINESE MEDALLION RUG

*Ch'ien-lung*

Field woven with a serrated lozenge lattice in brown and yellow, with eight small floral medallions; key fret border.

*Length, 8 feet 3 inches; width, 5 feet 2 inches*

## 471. CHINESE MEDALLION RUG

Deep amber brown field, woven with eight circular floral medallions and scrolling lotus branches, with harmonizing floral border.

*Length, 8 feet 2 inches; width, 5 feet 5 inches*

## 472. CHINESE FU-LION RUG

Rose field developing a scrolling cloud medallion woven with nine tan, blue, and brown *Fu*-dogs; chain and swastika fret borders.

*Length, 8 feet 2 inches; width, 5 feet 6 inches*

## 473. CHINESE FLORAL RUG

Celadon field woven in shades of blue and rose with floral branches, medallion, spandrels, and floral border.

*Length, 8 feet 11 inches; width, 6 feet 1 inch*



[NUMBER 474]

474. IMPERIAL CHINESE DRAP D'OR SILK VELVET RUG

*Fond d'or* woven with raised pile in shades of blue, green, tan, and *rouge de fer* with five writhing dragons amid clouds in pursuit of the precious jewel, the border with a design of formalized trees, between sapphire blue guards.

*Length, 9 feet 6 inches; width, 6 feet*

[See illustration]

475. CHINESE MEDALLION RUG  
Amber brown field, with a floral medallion between formalized blue leafage bearing rose and gray peonies; harmonizing floral and fret borders. *Length, 9 feet; width, 6 feet 3 inches*
476. CHINESE ANIMAL MEDALLION RUG  
Mustard yellow field with a scrolling blue floral design and eight medallions of spotted stags in landscape; particolored lattice and fret borders. *Length, 8 feet 11 inches; width, 6 feet 3 inches*

## CHINESE FURNITURE

477. TWO PAIRS LACQUER CARVED AND GILDED BOOK ENDS  
Carved in relief with figures in pagodas and landscape. *Height, 7 inches; width, 6½ inches*
478. CLOISONNÉ ENAMEL AND GLASS AQUARIUM  
Oblong glazed bowl, the frame and stand in red *cloisonné* enamel with scrolling floral design. *Height, 10 inches; length, 16 inches*
479. RED LACQUER AND GLASS AQUARIUM  
Oblong glazed bowl, the frame and stand lacquered sealing-wax red, with black and gold floral decoration. *Height, 12 inches; length, 14 inches*
480. DECORATED BLACK AND GOLD LACQUER CENTRE TABLE  
*Late Ming or K'ang-hsi*  
Oblong top on valanced cabriole frame; decorated in red and gold on a black ground with dragons and flying bats, peony and lotus branches, and fret ornament. *Height, 33 inches; length, 5 feet 3 inches*
481. TEAKWOOD FOUR-FOLD SCREEN, INSET WITH  
FAMILLE ROSE PLAQUES *Ch'ien-hung*  
Paneled folds, inset with rectangular porcelain plaques enameled with landscape scenes, fruiting and flowering branches, and calligraphy. *Height, 50 inches; length, 50 inches*



482. GREEN CLOISSONNÉ ENAMEL AND GLASS AQUARIUM  
WITH CARVED WHITE JADE HANDLES

45- Drum-shaped glazed bowl framed in *cloisonné* enamel with scrolling floral decoration, and having two jade dragon and loose ring handles. With stand. Height, 11¼ inches.

483. PAIR LACQUER CARVED AND GILDED MIRRORS

25- Upright mirror surmounted by panel carved with figures a various pursuits, and gilded.

Height, 30½ inches; width, 11 inches.

484. BRONZE GONG IN RED LACQUER STAND

Pass Circular bronze gong, suspended in stand lacquered sealing wax-red; with stick. Height, 26 inches; width, 22½ inches.

485. PAIR DECORATED RED LACQUER SQUARE GUERIDONS

*Ch'ien-lun*

80- The top incised with a flower and bird reserve in black and brown; square-leg frame lacquered with diaper and scrolling floral design. Height, 28½ inches.

486. PAIR DECORATED LACQUER CARVED AND GILDED MIRRORS

25- Upright mirror with panel carved in gilded relief with flora branches; the reverse with figures in terraced pavilions.

Height, 30½ inches; width, 13 inches.

487. PAIR JAPANESE CARVED, GILDED AND POLYCHROMED RÂM.

*XVIII Centur*

10- Branches of lotus, centring a rosetted and tasseled cord, with a pierced cordate frame.

Height, 20½ inches; length, 30 inches.

488. PAIR JAPANESE CARVED, GILDED AND POLYCHROMED RÂM.

*XVIII Centur*

10- Similar to the preceding, but carved with peonies.

Height, 20½ inches; length, 30 inches.

89. PAIR DECORATED RED LACQUER ARMCHAIRS  
The seat incised with perched birds upon peony branches in black and gold, the back with relief fret medallion. Frame lacquered a mottled red.
90. PAIR RED LACQUER MIRRORS  
WITH CARVED AND GILDED DECORATION  
Rectangular frame with mother-of-pearl floral design, enclosing panels of figures at various pursuits in carved and gilded relief at top and bottom. *Height, 24¾ inches; width, 18½ inches*
91. BROWN LACQUER CARVED AND GILDED HANGING SHELF  
Three shelves with scrolled supports, the sides and crown with carved and gilded figures on terraced pavilions.  
*Height, 35 inches; width, 24½ inches*
92. PAIR BROWN LACQUER CARVED AND GILDED  
HANGING SHELVES  
Three shelves between scrolled supports, with fretted galleries, and arched pediment with carved and gilded figures in pavilions.  
*Height, 45½ inches; width, 19 inches*
93. DECORATED RED LACQUER GUÉRIDON *Ch'ien-hung*  
Shaped square top decorated with figures in landscape, on bracketed cabriole support with fret and scrolling leaf patterns.  
*Height, 30 inches; width, 20 inches*
94. KOREAN RED LACQUER CABINET, MOUNTED IN  
WROUGHT IRON  
Upright chest, with hinged front; lacquered sealing-wax red, and mounted with lattice-perforated iron plaques and five handles.  
*Height, 36 inches; length, 38 inches*
95. JAPANESE CARVED, POLYCHROMED, AND GILDED  
THREE-FOLD SCREEN  
Paneled and latticed folds, centred with shaped plaques carved in polychromed relief with perched birds upon peony branches, and outlined before tan muslin.  
*Height, 45 inches; width, 40 inches*

496. LACQUER STAND, WITH GLASS FISH GLOBE

*Late Ming or K'ang-hsi*

Figure of a *Fu*-dog on square base, by shaft with lotus top supporting a fish bowl. Lacquered red-brown.

Height, 46 inches

497. BLACK AND GOLD LACQUER CENTRE TABLE

*K'ang-hsi*

Oblong top exhibiting birds flying above a flowering tree, the border and bracketed square legs with scrolling leafage.

Height, 34 inches; length, 41½ inches

498. CHINESE PAINTED SILK FOUR-FOLD SCREEN

*Yung Chêng*

Rectangular folds inset with brown silk painted in colors and India ink with figures of sages in mountainous landscapes.

Height, 5 feet 2 inches; length, 6 feet

499. JAPANESE CARVED OAK FOUR-FOLD SCREEN

Paneled folds carved with pierced floral branches and perched birds between lattices and scrolls, outlined before tan muslin.

Height, 40 inches; length, 44½ inches

500. LACQUER FU-DOG STANDING LAMP, WITH GOLD KO'SSU

TAPESTRY SHADE

*Ming*

Figure of a *Fu*-lion supporting turned shaft, fitted for electricity; gold Ko'ssu tapestry pagoda shade, and amethyst figure finial.

Height, 6 feet

501. FOUR WROUGHT IRON SILHOUETTE PANELS

Wrought in the form of a boat upon the water, silhouetted before fawn linen and framed.

17 inches square

502. PAIR CARVED TEAKWOOD MIRRORS

Oblong molded frame ornamented with pierced fret-carving and gilded knots (*chang*).

Height, 22¾ inches; width, 19¼ inches

[END OF SECOND SESSION]

### THIRD AND LAST SESSION

Friday, June 3, 1932, at 2:15 p.m.

*Catalogue Numbers 503 to 712 Inclusive*

---

#### GLASS, PORCELAINS, AND POTTERY

503. THREE CUT CRYSTAL GLASS DECANTERS  
AND TWELVE WINE GLASSES *English, XIX Century*  
Cut in various patterns. [Lot.]

504. TWENTY VENETIAN GLASS CLARETS  
Pale green bowl etched with crest, on tall slender stem. (*Private Owner*)

505. FIVE BRISTOL OPALINE GLASS SMALL TUMBLERS  
*XIX Century*  
Painted in sanguine and gold with festoons of flowers. [Lot.]

506. TEN JAPANESE PORCELAIN PLATES, ELEVEN SAUCERS  
AND EIGHT CUPS  
With butterfly decoration in colors and gold. One piece repaired. [Lot.]

507. FIVE VARIOUS SMALL POTTERY AND FAÏENCE OBJECTS  
*XIX Century*  
Covered sugar bowl, dog ornament, two molds or candle holders, and a small bowl. American and English. [Lot.]

508. DRESDEN ENAMEL PERFUME BOTTLE *Circa 1840*  
Painted with figures in Louis XV shepherd costumes with musical instruments in landscape gardens; French gilded silver mounts. *Height, 3 inches*

509. TEN BLOWN GLASS DECANTERS  
Pear-shaped decanters, in pairs; four with single handles. [Lot.] (*Private Owner*)

510. TWENTY-TWO BOHEMIAN GLASS SHERRIES  
AND TWENTY-THREE CLARETS

32<sup>50</sup>  
Sherris in green and clarets in red glass; reserved with thumb spots. [Lot.] (*Private Owner*)

511. ROCKINGHAM DECORATED PORCELAIN PART SERVICE

*Circa 1820*

32<sup>50</sup>  
Comprising: nine saucers, nine tea cups and three smaller cups, and a bowl; decorated in gold and maroon and with assorted designs of flowers. [Lot.] (*Private Owner*)

512. TWO EARLY AMERICAN GLAZED POTTERY JARS

5-  
One barrel-shaped, one cylindrical; one modeled with eagles and impressed *H. Gauz*, with metallic black glaze. [Lot.]

*Heights, 8 and 11 inches*

513. THREE EARLY AMERICAN GLAZED STONEWARE JUGS

8-  
One henna, one black, one brown. Pennsylvania and New England ware. [Lot.]

*Heights, 9 and 11 inches*

514. SIX OLD CERAMICS

*XVIII-XIX Century*

12<sup>50</sup>  
Leeds queen's ware deep circular dish; Lambeth slip-decorated brown stoneware pitcher; two Creil faïence *sucriers* with covers; two Wedgwood basalt creamers. One repaired. [Lot.]

515. ELEVEN LIMOGES PORCELAIN SOUP PLATES

5-  
Decorated in red and gold; one slightly chipped.

*Diameter, 9 inches*

516. CUT CRYSTAL GLASS LIQUEUR SET  
WITH FILIGREE SILVER MOUNTS

15-  
Two small decanters, twelve silver holders for small glasses; three glasses missing. Monogrammed. [Lot.]

517. SIX SANDWICH AND SANDWICH TYPE GLASS OBJECTS

5-  
Whale-oil lamp, turkey-shaped covered dish, three jars, and a small pitcher. [Lot.]

518. EARLY AMERICAN BLOWN CLEAR GLASS JAR  
BOTTLE, AND VASE  
750 Tall jar with flaring neck; pear-shaped bottle with small mouth;  
bulbous vase with scalloped lip. *Heights, 23, 17, and 13 inches*
519. SANDWICH PRESSED OPALINE GLASS MANTEL CLOCK  
AND TWO VASES *XIX Century*  
Vases turquoise blue and probably English. [Lot.]  
*Heights, 12 and 13 inches*
520. COPPER AND PINK LUSTRE PITCHER *English, XIX Century*  
Encircled by a band of mottled pink lustre.  
2- *Height, 4½ inches*
521. TWELVE STAFFORDSHIRE BLUE PRINTED CHINA PLATES  
Decorated with various American historical subjects. [Lot.]  
750 *Diameter, 10 inches*
522. TWELVE COALPORT DECORATED PORCELAIN PLATES  
Flower and diaper ornament in rose and green.  
0- *Diameter, 8½ inches*
523. NANKING BLUE AND WHITE PORCELAIN  
TEMPLE VASE AND LAMP  
With landscape and floral decoration; vase imperfect. (*Private  
Owner*)  
1- *Heights, 23 and 32½ inches*
524. BERLIN BISQUE PORCELAIN TABLE GARNITURE  
Comprising: centrepiece with figures of dancing putti, three  
750 figures as flower holders, and four compotiers of festooned  
baskets held by putti. [Lot.] (*Private Owner*)  
*Height of centrepiece, 15¼ inches*
525. THREE EARLY AMERICAN SALT GLAZED STONEWARE JARS  
*XIX Century*  
One with impressed mark of *J. and F. Norton, Bennington, Vt.*  
Decorated in cobalt blue. [Lot.]  
= *Heights, 11, 13, and 18 inches*



526. MISCELLANEOUS LOT OF OLD CERAMICS

*XVIII-XIX Century*

5-  
Comprising a Staffordshire printed bowl; cup; saucer and cup plate; toy ewer and basin; copper lustre cream pitcher; pepper shaker; and Oriental Lowestoft cup, broken and repaired, with American eagle decoration. [Lot.]

527. TWENTY CUT CRYSTAL WINE AND SPIRIT GOBLETS  
TWO DECANTERS, THREE TUMBLERS, AND A TRAY

*English, XIX Century*

15-  
All handsomely cut in diamond and sunburst pattern. [Lot.]

528. EARLY AMERICAN BLOWN CLEAR GLASS VASE

10-  
Tulip-shaped, with ribbed sides on flaring circular foot; early Sandwich type. *Height, 11 inches*

529. THREE DECORATIVE GLASS AND CHINA OBJECTS

*Early XIX Century*

10-  
Pair English cut glass decanters with stoppers, and Tucker flower-painted white and gold pitcher. [Lot.]  
*Heights, 9½ and 12½ inches*

530. EIGHT HAVILAND PORCELAIN OYSTER PLATES

20-  
Painted, gilded, and modeled in oyster pattern; made for Tiffany and Co., New York. *Diameter, 8¾ inches*

531. PAIR SANDWICH PRESSED GLASS AND  
GILDED METAL WICK LAMPS

10-  
Pineapple-shaped reservoir, pressed with heart and diamond pattern, on gilded metal stems and marble base. *Height, 11½ inches*

532. BLOWN GLASS SERVICE

17-  
Comprising: two fruit bowls on stem and two candlesticks in amethyst Venetian glass; two decanters with enameled *sherry* and *gin* labels and four decorated glass brandy bottles, with stoppers. [Lot.] (*Private Owner*)

## 533. DRESDEN PORCELAIN GROUP

*La Vertu Recompensée* with four youths and three maidens in gaily colored costumes, on a plinth strewn with dainty flowers.  
 (Private Owner) Height, 13½ inches

## 534. ELEVEN LENOX PORCELAIN PLACE PLATES

Centres decorated with Dutch windmill scenes on pale yellow ground. Diameter, 10½ inches

## 535. MANDARIN PORCELAIN BOWL

XIX Century  
 Elaborately decorated with panels of figures, flowers, and birds in *famille rose* enamel colors. Diameter, 14½ inches

## 536. TWELVE MANDARIN PORCELAIN PLATES

XIX Century  
 Decoration similar to the preceding. Diameter, 9 inches

## 537. TWELVE MANDARIN PORCELAIN PLATES, AND A PLATTER

XIX Century  
 Decoration similar to the preceding. [Lot.]  
Diameter, 7¾ inches

## 538. MANDARIN PORCELAIN PART TEA SERVICE

XIX Century  
 Decoration similar to the preceding. Ten cups, twelve saucers, a teapot, and a bowl. One piece repaired. [Lot.]

## 539. SLIP-DECORATED COPPER LUSTRE PITCHER

English, Early XIX Century  
 Large pitcher with classical motives and band of grape vine in raised white slip on copper and purple lustre ground.  
Height, 7½ inches; diameter, 7½ inches

[See illustration on page 101]

## 540. CUT GLASS URN

Irish, XIX Century  
 Handsome piece in the Georgian style; flat cut in diamond pattern, on square foot. Height, 12 inches

541. TWELVE TIFFANY CUT CRYSTAL GLASS PLATES  
Fine quality, cut in laurel and sunburst pattern.

*Diameter, 9 inches*

542. SILVER RESIST LUSTRE PITCHER *English, circa 1800*  
Decoration of pheasants and flowers in white resist.

*Height, 4½ inches*

543. SILVER RESIST LUSTRE PITCHER *English, circa 1800*  
Somewhat similar to the preceding.

*Height, 4½ inches*

544. SILVER RESIST LUSTRE PITCHER *English, circa 1800*  
Somewhat similar to the preceding.

*Height, 4½ inches*

545. TWO STAFFORDSHIRE TRANSFER-DECORATED PITCHERS  
*English, Early XIX Century*

Wedgwood type, decorated in colored transfer with rustic scenes, birds, flowers, and a panoramic landscape view. Chipped. [Lot.]

*Heights, 6½ and 7½ inches*

546. SEVEN ELABORATELY CUT CRYSTAL GLASS ARTICLES  
Comprising a scalloped punch bowl on loose stand; flower vase; covered jar; bonbon compote; four various bowls and dishes. [Lot.]

547. MINTON WHITE AND GOLD PORCELAIN DINNER SERVICE  
Comprising: thirty-one dinner plates, nineteen soup plates, nineteen cereal plates, eighteen dessert plates, thirteen compote plates, twenty crescent-shaped salad plates, square dish, two bouillon cups and eighteen saucers, five demitasses and twenty-three saucers; crested; in all 169 pieces. [Lot.] (*Private Owner*)

548. TWO ITALIAN OIL JARS  
In decorated faïence; repaired. (*Private Owner*)

*Heights, 24 and 26 inches*

## SILVER AND SHEFFIELD PLATE

- 2-<sup>12</sup> 549. THREE SILVER-PLATED OVAL PLATTERS  
 Variesly chased. *Lengths, 13 and 17 inches*
- 20- 550. PAIR GERMAN SILVER CANDLESTICKS  
 IN THE LOUIS XV STYLE *XVIII Century*  
 Of grade '800' silver. *Height, 8 inches*
- 15- 551. SHEFFIELD PLATE PIERCED OBLONG INKSTAND  
*Georgian Style*  
 Containing two glass inkwells. *Length, 10 inches*
- 6- 552. PAIR EARLY AMERICAN PEWTER CANDLESTICKS  
*Henry Hopper, New York, circa 1845*  
 Graceful urn-shaped shaft on circular dome base, flaring  
*bobèche*. With maker's name on bottom. *Height, 10 inches*
- 15- 553. ENGLISH CHASED SILVER CHOCOLATE POT *Georgian Style*  
 Chased with fluting and drapery swags. Brown ebony handle.  
*Height, 7½ inches*
- 15- 554. SET OF SILVER MEAT CARVERS AND SERVERS  
 Eight pieces with bone handles and chased silver mounts, in-  
 cluding a pair of servers nicely engraved. [Lot.]
- 8- 555. FOUR VARIOUS SILVER PLATED OBJECTS  
 Oblong tray with chased border; three pierced and chased  
 coasters. [Lot.]
- 20- 556. GEORGIAN SHEFFIELD PLATE COFFEE POT  
 AND A TEA CADDY *XIX Century*  
 Coffee pot in Queen Anne style; tea caddy oval with gadroon  
 border and loose cover. [Lot.] *Heights, 5½ and 10½ inches*
- 25- 557. TWO GORHAM SILVER-PLATED CHASED CIRCULAR SALVERS  
 Centre and border engraved and chased with flowers, scrolls,  
 and vines. One has three feet. *Diameter, 17 inches*

558. MISCELLANEOUS LOT OF SHEFFIELD PLATE OBJECTS

*XIX Century*

30-  
Róse bowl and mirror plateau, flower vase, rose-water ewer, teapot, two sugar bowls, two creamers, and silver-handled carving fork. [Lot.]

559. TWENTY-FOUR GEORGE III IRISH SILVER-HANDLED

TABLE KNIVES AND FORKS *John Warner, Cork, circa 1760*

20-  
Twelve knives with steel sabre blades, the silver handles chased with foliage; twelve two-pronged forks with similarly chased handles. Rare. One handle slightly different. Defective. [Lot.]

Collection of Lord Fermoy, Rock Barton Castle, Limerick, Ireland

560. TWENTY-FOUR GEORGE III IRISH SILVER-HANDLED

DESSERT KNIVES AND FORKS *Cork, circa 1760*

42<sup>00</sup>  
Twelve knives and twelve two-pronged forks. Somewhat similar to the preceding table knives and forks. Rare. Defective. [Lot.]

Collection of Lord Fermoy, Rock Barton Castle, Limerick, Ireland

561. GEORGIAN SHEFFIELD PLATE ENGRAVED HOT WATER URN

*XIX Century*

37<sup>00</sup>  
Fluted vase shape with domed and pointed cover, reeded handles, and square base. *Height, 22 inches*

[See illustration on page 95]

562. GEORGIAN SHEFFIELD PLATE ENGRAVED HOT WATER URN

*XIX Century*

27<sup>00</sup>  
Somewhat similar to the preceding. *Height, 22½ inches*

563. SHEFFIELD PLATE ENGRAVED OBLONG TEA TRAY

*George III Style*

27<sup>00</sup>  
With chased gadroon and shell border; engraved floral centre. *Length, 23½ inches*

564. SHEFFIELD PLATE PLAIN OVAL TEA TRAY *George III Style*  
With chased gadroon border and open handle.

*Length, 25½ inches*

565. GEORGE III IRISH SILVER CREAM JUG *Dublin, circa 1812*  
Oblong; engraved with bands of arabesques and flowers, on  
four claw feet.

*Height, 4¾ inches*

566. SHEFFIELD PLATE TEA KETTLE ON STAND, WITH LAMP  
*XIX Century*

George II style. Chased with fluting, on three scroll feet.

*Height, 12½ inches*

567. SHEFFIELD PLATE CHASED OBLONG TEA TRAY

*George III Style*

With chased gadroon and shell border and open handle.

*Length, 27 inches*

568. PAIR GEORGIAN SHEFFIELD PLATE LYRE PATTERN

CANDELABRA

*XIX Century*

Lyre-patterned stems supporting curved branches and urn  
sconces, on flaring oval base. Fine quality. *Height, 12 inches*

569. PAIR GEORGIAN SHEFFIELD PLATE TWO-ARM CANDELABRA

*XIX Century*

Pleasing Sheraton design, with urn sconces for three candles,  
on reeded and curved branches; tapered baluster stem and oval  
base. *Height, 18 inches*

570. PAIR GEORGIAN SHEFFIELD PLATE TWO-ARM CANDELABRA

*Circa 1800*

With urn-shaped sconces for three candles, on reeded curved  
branches; tapered baluster stem and circular base with gadroon  
border. *Height, 21 inches*





[NUMBER 571]

571. EARLY AMERICAN SILVER TEA SERVICE

*G. Forbes, New York, circa 1810*

Comprising a shaped oblong teapot on ball feet with ebony handle and finial, covered sugar bowl and creamer to match. Engraved with border of formal foliage, and with small monogram. [Lot.]

[See illustration]

571A. TWELVE GEORGE II SILVER PISTOL-HANDLED  
DINNER KNIVES

*Circa 1750*

With fluted and leaf-voluted pistol handle engraved with crest and maker's mark BL; in fine condition.

571B. TWELVE GEORGE II SILVER PISTOL-HANDLED  
DESSERT KNIVES

*Circa 1750*

To match the preceding.

571C. TWELVE GEORGE II SILVER PISTOL-HANDLED  
DESSERT KNIVES *Circa 1750*

To match the preceding, one with slightly larger blade.

572. EARLY AMERICAN SILVER TEA SERVICE

Assembled lot comprising a half fluted oval teapot on flaring foot, two-handled sugar bowl, and a cream jug on ball feet. Engraved with the monogram MB. [Lot.]

*Height of teapot, 8 inches*

Collection of Mrs. Alice Bull, Newport, R. I.

573. GEORGIAN SHEFFIELD PLATE WIRE PATTERN CAKE BASKET  
AND A SMALL SALVER *Early XIX Century*

Cake basket oval with swing handle; salver with engraved centre. [Lot.]

574. GEORGIAN SHEFFIELD PLATE TEA URN AND A TEAPOT

*XIX Century*

Urn with lion-mask and ring handles, and spirit lamp; teapot of later design. [Lot.] *Heights, 10½ and 9½ inches*

575. ENGRAVED SILVER TEAPOT

*English, XIX Century*

Sheraton design, engraved with bands of formal foliage; Victorian hall marks. *Length, 10½ inches*

576. SHEFFIELD PLATE CHASED OBLONG INKSTAND *XIX Century*

George IV style; contains two cut glass inkwells and a taper holder, in chased oblong tray on four claw feet.

*Length, 13½ inches*

577. PAIR GEORGIAN SHEFFIELD PLATE TWO-ARM CANDELABRA

*XIX Century*

With fluted urn sconces for three candles, on baluster stem and circular base. *Height, 17½ inches*

578. TWO GEORGE III ENGRAVED SILVER CREAMERS

*English and Irish, circa 1800*

One oblong with shaped rim and four feet, one helmet-shaped with reeded handle and square foot. [Lot.]

*Heights, 5 and 5½ inches*

579. CHASED SILVER CHOCOLATE POT AND A CREAM JUG  
*XVIII and Early XIX Centuries*

Chocolate pot vase-shaped, chased with putti and flowers; cream jug oblong, with reeded handle and square foot. Dutch and German. *Heights, 5¾ and 9 inches*

580. SIX VARIOUS SILVER AND SILVER-PLATED OBJECTS

Three-mold glass jar with sterling silver cover; antique Dutch silver taper-holder; ivory handled silver punch ladle; silver-plated covered bonbon dish; bone-handled knife and fork. [Lot.]

581. TWO SILVER PUNCH LADLES *XVIII Century*

With slender horn and wood handles. *Lengths, 13½ and 14 inches*

582. THREE GEORGIAN SHEFFIELD PLATE  
CHAMBER CANDLESTICKS *Circa 1810*

With chased gadroon borders, and snuffers. [Lot.] *Diameter, about 5½ inches*

FURNITURE AND DECORATIONS

583. IVORY MINIATURE PORTRAIT *French, Late XVIII Century*

Oval bust portrait of Philippe Egalité, in rectangular silver gilt frame enriched at the corners with *fleurs de lis* set with garnets and sapphires. *Height, 2¼ inches; width, 2 inches*

584. PAIR POTTERY FIGURINES, AS LAMPS

Chinese seated figure of a tiger in brown and beige; fitted for electricity, with shade. (*Private Owner*) *Height, 13½ inches*

585. CARVED GREEN QUARTZ TABLE LAMP

Vase and cover of old bronze form with gilded metal mounts, fitted for two lights; beige silk and velvet shade; carnelian and jade trimmings. *Height, 29½ inches*

586. PAIR CHINESE BLACK LACQUER BOWLS  
 INSET WITH MOTHER-OF-PEARL  
 Decorated with landscape and figures in iridescent shell; silver lacquer lining. (*Private Owner*) *Diameter, 4 $\frac{1}{4}$  inches*
587. THREE CHINESE AND JAPANESE OBJECTS  
*XVIII-XIX Century*  
 Cloisonné enamel candlestick; *nashiji* gold lacquered despatch box; carved wooden inro. [Lot.]
- 587A. CARVED IVORY WAND *French, XVIII Century*  
 Official staff terminating in a *fleur de lis*; imperfect.  
*Length, 32 inches*
588. ARMS OF CARVED IVORY AND BONE  
 Two gold-damascened daggers with carved ivory hilts, Persian, seventeenth century; and bone powder flask carved in bas-relief with Diane de Poitiers and her hounds, French, circa 1600. [Lot.]
589. CARVED GREEN QUARTZ LAMP  
 Vase and cover of old bronze form, mounted in gilded metal and fitted for two lights; with green silk shade and agate finial.  
*Height, 28 $\frac{1}{2}$  inches*
590. CHINESE BRONZE VASE, FITTED AS LAMP  
 Globular-shaped Han type vase standing on broad foot and with two small loop handles; fitted for electricity. (*Private Owner*)  
*Height, 30 inches*
591. JAPANESE DECORATED BROWN LACQUER BOX *XIX Century*  
 Oblong with loose lid decorated in relief with a fly switch, a tatcho, and an octagonal medallion, in cloisonné enamel and coral red, ivory, and gold lacquer on a ground simulating hewn timber.  
*Length, 15 $\frac{1}{2}$  inches*

- 30- 592. TWO STAINED AND PAINTED GLASS PANELS  
IN THE GERMAN GOTHIC TASTE  
Depicting St. Margaret in white and gold robes and St.  
Catherine in white robes with red and gold cloak. (*Private  
Owner*)  
Height, 14 inches; width, 7½ inches  
Height, 13 inches; width, 9 inches
- 10- 593. TWO STAINED AND PAINTED GLASS ROUNDELS  
IN THE GERMAN GOTHIC TASTE  
One depicting St. Barbara in red robes, the other an armoria  
bearing with inscription. (*Private Owner*)  
Diameter, 11 inches
- 15- 594. PAIR STAINED AND PAINTED GLASS PANELS  
IN THE GERMAN GOTHIC TASTE  
Bearded figures of Socrates in green, and David in red robe  
with banderoles and escutcheons. (*Private Owner*)  
Height, 13¾ inches; width, 8¼ inches
- 10- 595. PAIR STAINED AND PAINTED GLASS PANELS  
IN THE GERMAN GOTHIC TASTE  
Depicting St. Hubert with mitre and green chasuble, with his  
stag; and St. Benno in white cope, with a fish. (*Private  
Owner*)  
Height, 16½ inches; width, 7¾ inches
- 15- 596. TWO STAINED AND PAINTED GLASS PANELS  
IN THE GERMAN GOTHIC TASTE  
Depicting the white-robed Virgin and Child and the seated  
figure of the Virgin with the Child on her lap. (*Private  
Owner*)  
Height, 15 inches; width, 8¾ inches
- 15- 596A. FLEMISH GOTHIC SCULPTURED WOOD RELIEF  
Depicting fourteen of the principal saints with their attributes  
carved in chestnut wood, and mounted in glazed and ebonized  
shadow box.  
Height, 14 inches; length, 27 inches

## 597. CARVED ROSE QUARTZ LAMP

Carved with the figure of Kuan Yin on gilded metal base; fitted for single light. With peach silk shade and jade finial.

*Height, 19 inches*

## 598. CARVED GREEN QUARTZ TABLE LAMP

Vase and cover with gilded metal mount fitted for two lights with rose pink silk shade and jade trimmings. *Height, 26 inches*

## 599. CARVED ROSE QUARTZ LAMP

Carved with the figure of Kuan Yin on teakwood and gilded metal base; fitted for single light with rose pink silk shade and jade finial.

*Height, 20 inches*

## 600. MISCELLANEOUS LOT OF COPPER, IRON, AND BRASS OBJECTS

*American, XIX Century*

Five candlesticks, two wall sconces, door knocker, coffee pot, coffee mill. [Lot.]

## 601. BRASS FIREPLACE GARNITURE

*Colonial Style*

Comprising: pair of steeple-top andirons, fire screen, Cape Cod lighter, poker, shovel, tongs, brush, and stand. [Lot.] (*Private Owner*)

*Height of andirons, 17 inches*

## 602. EARLY FEDERAL PIERCED BRASS FENDER

Small curved fender pierced with bands of formal foliage; on ball feet.

*Height, 7 inches; length, 36 inches*

## 603. THREE EARLY AMERICAN CAST IRON DOOR KNOCKERS

One as head of a Bacchante, one medallion-shaped, one cartouche-shaped. [Lot.]

*Height, about 7 inches*

## 604. BRONZE DORÉ FIREPLACE GARNITURE

*Louis XVI Style*

Comprising: pair of flame-top *chenets* and pair of quiver *chenets*, two bronze-handled tools in the Renaissance taste, and fire screen. [Lot.] (*Private Owner*)

*Height of chenets, 20 and 25 inches*

## 605. PAIR COLONIAL BRASS LEMON-TOP ANDIRONS

Handsome vase baluster pattern on splayed legs with ball feet.

*Height, 24 inches*



- 22<sup>12</sup> 606. BRASS FIREPLACE GARNITURE *Colonial Style*  
 Comprising: pair andirons, fire screen, Cape Cod lighter,  
 shovel, poker, tongs, and stand. [Lot.] (*Private Owner*)  
*Height of andirons, 18 inches*
- 12<sup>12</sup> 607. COLONIAL PIERCED STEEL FENDER  
 Oblong, the sides handsomely pierced in the classic taste, with  
 beaded borders. *Height, 6½ inches; length, 50 inches*
- 42<sup>12</sup> 608. BRASS FIREPLACE GARNITURE *Colonial Style*  
 Comprising: pair ball-top andirons, fire screen, shovel, poker,  
 tongs, stand, and fire guard. [Lot.] (*Private Owner*)  
*Height of andirons, 20 inches; length of fire guard, 54 inches*
- 15- 609. CAST IRON FIREBACK *English, dated 1703*  
 Rectangular, with arched top; cast in the design of a fortress  
 surmounted by a figure holding a sword and a standard. Bears  
 the date 1703. *Height, 27½ inches; length, 28 inches*
- 20- 610. PAIR IRON SALUTING CANNONS  
 With massive plain barrels. Have carriages.  
*Lengths of barrels, 27 inches*
- 25- 611. PAIR SALUTING CANNONS  
 Massive iron barrels, on carriages.  
*Length of barrels, 30 inches*
- 20- 612. BRASS FIREPLACE GARNITURE *Colonial Style*  
 Comprising: pair acorn-top andirons, fire screen, Cape Cod  
 lighter, shovel, poker, tongs, and stand. [Lot.] (*Private*  
*Owner*) *Height of andirons, 16 inches*
- 12<sup>12</sup> 613. CHIPPENDALE MAHOGANY DRESSING GLASS  
*English, XVIII Century*  
 Comprising small oblong swing mirror surmounting shaped  
 base with three drawers and bracket feet.  
*Height, 19 inches; width, 19 inches*
- 12<sup>12</sup> 614. MAHOGANY CANTERBURY *English, Early XIX Century*  
 Stand for folios and magazines, with slatted sides, turned short  
 legs, and casters. *Height, 17½ inches; length, 19 inches*



[NUMBERS 561 AND 615]

- 5= 615. HEPPLEWHITE INLAID MAHOGANY SERPENTINE-FRONT  
 CARD TABLE *American, Late XVIII Century*  
 Shaped and hinged top cut in pleasing curves, the frieze and  
 four tapered square legs paneled with inlaid stringings of light  
 wood. *Height, 30 inches; length open, 35 inches*

[See illustration]

8- 616. MAPLE LADDER-BACK CHAIR *American, XVIII Century*  
Back with four arched slats and rush seat; turned legs and stretchers.

15- 617. CARVED AND GILDED 'TROPHY' MIRROR *Spanish, XVII Century*  
Broad frame carved with foliations, the sides with birds of the chase perched upon scrolls. *Height, 27 inches; width, 25 inches*

12<sup>50</sup> 618. MAPLE SLAT-BACK SIDE CHAIR AND TWO MAHOGANY FOOTSTOOLS *American, XVIII-XIX Century*  
Chair with attractively turned posts, three curved slats, and old braided rush seat; footstools with slip tops in yellow brocade.

30- 619. GEORGIAN MAHOGANY CHEST OF DRAWERS *English, XVIII Century*  
Chest of four drawers, top grooved; stands on four bracket feet. Furnished with original ring and rosette brass handles. *Height, 35 inches; width, 33 inches*

7- 620. HEPPLEWHITE INLAID MAHOGANY CARD TABLE *American, Late XVIII Century*  
Hinged rectangular top with rounded corners, the frieze and tapered square legs handsomely figured and inlaid with bandings of light and dark woods. *Height, 28½ inches; length open, 35 inches*

25- 621. MARQUETRY DECORATED CHERRYWOOD CANDLESTAND *American, XVIII Century*  
Square top inlaid with fan and lozenge motive in different woods, on turned pedestal and cabriole tripod with snake feet. Rare. *Height, 26½ inches; width, 15 inches*

50- 622. DECORATED SATINWOOD AND MAHOGANY PEMBROKE TABLE *English, circa 1800*  
Top with two drop leaves decorated with grape festoons, centring amorini amid the clouds; one drawer, on quadruped pedestal support. *Height, 28 inches; length open, 40 inches.*

## 623. EMPIRE BLACK AND GOLD WALL MIRROR

*American, circa 1825*

Oblong frame composed of split balusters with metal rosettes at the corners; with painted glass panel above the mirror. Re-decorated.

*Height, 32 inches; width, 16½ inches*624. ARCADED YORKSHIRE OAK TABLE *English, XVII Century*

Unusual triangular model of the Jacobean period on plain columnar baluster supports, the apron with two arches. Contemporary hexagonal top.

*Height, 29½ inches; width, 36 inches*

From Charles of London

## 625. QUEEN ANNE CARVED WALNUT AND GILDED WALL MIRROR

*XVIII Century*

Molded frame of figured walnut, fret-carved at the top and base in scroll outlines; the crest incised and gilded with formal shell and foliage. Old glass.

*Height, 32 inches; width, 18 inches*

## 626. SEVEN CURLY MAPLE CANE-SEATED CHAIRS

*American, circa 1825*

Splatted and slightly conforming back, turned spindle legs; cane seat.

## 627. SHERATON CANED APPLEWOOD SOFA

*WITH REMOVABLE BACK American (?) Early XIX Century*

In light applewood with one voluted arm; the frieze, crest rail, arm, and the four legs grooved to simulate bamboo. The back, arm, and seat caned; furnished with light blue silk loose cushions and casters. Cane needs some repair.

*Length, 6 feet 4 inches*



[NUMBERS 628 AND 629]

628. CARVED GREEN QUARTZ LAMP

Vase and cover of old bronze form with gilded metal mounts; fitted for two lights, with celadon crepe silk shade and jade and carnelian trimmings. *Height, 31 inches*

[See illustration]

## 629. LOUIS XVI INLAID WALNUT COMMODE

*Italian, XVIII Century*

70- Rectangular, with three drawers and tapered short legs. Decorated with formal foliage marquetry in light woods.

*Height, 34½ inches; length, 47 inches*

[See illustration]

## 630. HEPPLEWHITE MAHOGANY SHIELD-BACK SIDE CHAIR

*American, XVIII Century*

250- Shield back composed of five tapered and curved upright slats; shaped seat in blue silk. Grooved and tapered square legs with stretchers.

## 631. HEPPLEWHITE INLAID MAHOGANY CARD TABLE

*New England, circa 1800*

30- Hinged top with bow-shaped front, veneered with crotch satinwood. On four tapered square legs.

*Height, 28 inches; length open, 35 inches*

## 632. CARVED WALNUT RENAISSANCE CABINET

*Italian, in part XVII Century*

1250- The rectangular front flanked by fluted Doric pilasters crested by leonine masks; one finely carved door and one molded drawer. Lion-claw base of later date.

*Height, 33 inches; width, 26½ inches*

From French &amp; Co., New York

## 633. SHERATON MAHOGANY PEDESTAL BREAKFAST TABLE

*English, circa 1805*

30- Oblong top with rounded corners, on vase baluster pedestal and four outplayed, grooved and tapered square legs ending in brass shoes and casters. *Height, 29 inches; length, 47 inches*

## 634. HEPPLEWHITE INLAID MAHOGANY BUREAU

*American, circa 1800*

15- Four drawers; chased panels with inlaid satinwood lines; valanced skirt and tapered bracket feet.

*Height, 38½ inches; length, 43½ inches*



635. RENAISSANCE WALNUT BALUSTER TABLE

*French, Early XVII Century*

Pass Mitred and molded top on central baluster arcade and four deeply fluted pyriform supports. Considerable restorations.

*Height, 31 inches; length, 47 inches*

From Demotte & Co., New York

636. SHERATON MAHOGANY TALL-CASE CLOCK

*Thomas and Hoadley, Connecticut, circa 1810*

Ho- Tall case of figured mahogany with chamfered and reeded corners and scrolled pediment. Works renewed.

*Height, 7 feet 5 inches*

637. WILLIAM AND MARY WALNUT MARQUETRY  
DRESSING TABLE

Jo- Oblong top, inlaid with an oval medallion and spandrel pieces of seaweed marquetry, repeated upon the drawer front; trumpet-turned legs. *Height, 29½ inches; length, 33 inches*

638. LOUIS XV CARVED FRUITWOOD COMMODE

*French, XVIII Century*

60- Provincial piece with gently curved front containing three drawers furnished with a handsome set of brass rosette and swivel handles. *Height, 37 inches; length, 45 inches*

639. HEPPLEWHITE INLAID MAHOGANY PEMBROKE TABLE

*American, Late XVIII Century*

42<sup>10</sup> Oval top, with hinged leaves on pivoting bracket; one drawer. Tapered square legs, banded and inlaid with light woods.

*Height, 28½ inches; length open, 40 inches*

640. CHIPPENDALE CARVED MAHOGANY WALL MIRROR

*XVIII Century*

30 Tall frame, fret-carved at the top and base in scroll outline, contains two panels of old mirror glass. Few small repairs.

*Height, 4 feet 10 inches; width, 24 inches*



[NUMBERS 539 AND 641]

## 641. QUEEN ANNE MAPLE TRAY-TOP TEA TABLE

*American, XVIII Century*

Oblong top with raised and molded edge, on four slender curved legs ending in pad feet; the frieze is cut in a series of cyma curves. One leg repaired.

*Height, 28 inches; length, 28½ inches*

[See illustration]

642. LOUIS XVI INLAID ACAJOU SMALL TABLE

*French, XVIII Century*

22<sup>50</sup>  
Oblong top inlaid and veneered to a mosaic pattern consisting of numerous small pieces of pollarded wood, which is chipped in places; bordered by a pierced bronze gallery. One drawer, fluted and tapered round supports.

*Height, 28½ inches; width, 23 inches*

From Gimpel & Wildenstein, Paris

643. SET OF THREE SHERATON MAHOGANY CHAIRS

*English, Late XVIII Century*

37<sup>50</sup>  
Armchair and two side chairs, the molded square backs filled with shaped upright slats; tapered square legs with stretchers. Seats in rose brocatelle.

644. PAIR CARVED AND GILDED TORCHÈRES MOUNTED AS LAMPS

*Italian, XVII Century*

60-  
Leaved baluster shaft, on triangular scrolled base with lion-claw feet. Fitted for electricity, with decorated paper and parchment shades.

*Height, 5 feet*

Torcherès from French & Co., New York

645. QUEEN ANNE WALNUT FRAMED WALL MIRROR

*Early XVIII Century*

17<sup>50</sup>  
Arched narrow frame of light walnut containing two old panels of beveled mirror glass.

*Height, 4 feet 4 inches; width, 24½ inches*

646. LOUIS XV CARVED WALNUT SETTEE  
IN ANTIQUE VERDURE TAPESTRY

165-  
Handsomely molded and voluted walnut frame carved with a group of foliage and scrolls on the crest. Upholstered and covered in seventeenth century Flemish verdure tapestry, woven in shaded greens and tans. Frame of later date.

*Length, 5 feet 9 inches*

[See illustration]



[NUMBER 646]

647. GEORGIAN GREEN AND GOLD LACQUER HALF-MOON  
CABINET ON STAND

35- The upper part with rectangular mullioned and glazed door, the stand on vase-shaped balusters and with one drawer. *Chinoiserie* decoration in relief and flat gold on a richly mottled dark green ground. Height, 70 inches; width, 44½ inches

648. PAIR 'DANIEL MAROT' HIGH WALNUT ARMCHAIRS

60- Carved voluted arms, tapering bell supports, saltire stretcher; shaped back and seat covered in yellow damask.

649. DEMI-LUNE WALNUT CONSOLE TABLE

*Provençal, XVIII Century*

5- Semi-circular top veneered in walnut, molded underframing, tapered quadrangular legs. Height, 32 inches; length, 47 inches

650. SHERRATON MAHOGANY SEWING TABLE

*New England, 1800-1810*

90- Square top contains two fitted drawers with *reponssé* gilded metal knobs; ringed pilasters at the corners extend into reeded and turned legs. Height, 28 inches; width, 20 inches

651. SIX LOUIS XVI CARVED WALNUT AND CRIMSON

TAFFETAS FAUTEUILS *Italian, XIX Century*

60- Cane seat and oval back, with crimson taffetas valance and seat cushion; open molded arms, round stop-fluted and tapering legs. (*Private Owner*)

652. SIX LOUIS XVI CARVED WALNUT AND CRIMSON

TAFFETAS FAUTEUILS *Italian, XIX Century*

60- Similar to the preceding. (*Private Owner*)

653. SIX LOUIS XVI CARVED WALNUT AND CRIMSON

TAFFETAS SIDE CHAIRS *Italian, XIX Century*

72- *En suite* with the preceding. (*Private Owner*)

654. MAPLE AND SNAKEWOOD SOFA TABLE

*Russian, Early XIX Century*

60- Of rich satinized veneer, the *marqueterie* of a formal neo-Greek design; gilded bronze claw sabots. Height, 28 inches; length open, 5 feet

## 656. SHERATON MAHOGANY FOUR-POST BEDSTEAD

*American, circa 1800*

2- With two vase baluster grooved and tapered foot posts and two plain square tapered head posts joined by a shaped headboard. Furnished with side rails. Finials of foot posts missing.

*Height, 7 feet 1 inch; length, 6 feet; width, 5 feet*

## 657. CARVED CHERRY FOUR-POST BEDSTEAD

*American, XIX Century*

3- The four posts richly carved in acanthus-leaf design and turned; scrolled head and foot boards. Equipped with box springs, mattress, and coverlet.

*Height, 6 feet 8 inches; length, 6 feet 8 inches; width, 58 inches*

## 658. TURNED WALNUT AND MAPLE GATE-LEG TABLE

*American, circa 1810*

4- Circular top of faintly figured maple, the stationary and gated legs and stretchers all finely turned in vase baluster pattern. A drawer at one end of the frame. Retains old finish.

*Height, 28 inches; diameter, 44½ inches*659. PAIR GEORGIAN CARVED AND GILDED PIER MIRRORS  
IN THE STYLE OF WILLIAM KENT

5- Richly molded and carved frames with triangular pediment in architectural style, embellished at top and sides with carved leaf cartouche and acanthus swags. (*Private Owner*)

*Height, 5 feet 5 inches; width, 41 inches*

## 660. RENAISSANCE CARVED OAK CABINET

*German or Swiss, XVI Century*

3- Upright, with gallery and two cupboards above two cyma-curved drawers; supported on rectangular front members. The stiles, rails, and drawer fronts *sgraffiato*-carved with laurel leafage and infloretted guilloche motives. Trimmed with wrought iron pear-drop handles.

*Height, 64½ inches; width, 54 inches*

Collection of Ambrose Monell, American Art Association-Anderson Galleries, 1930



PAINTINGS

JAMES JOSHUA SHANNON, R. A.

BRITISH: 1862-

665. THE MORNING PAPER

750  
Seated life-size figure of a young man, the head turned to the right, wearing a brown suit and reading a newspaper, a cigarette in his left hand; his left foot is crossed over high right knee.

Signed at lower left, with inscription, J. J. SHANNON, and dated 1890

*Height, 54 inches; width, 36 inches*

GENNARO BEFANI

ITALIAN: CONTEMPORARY

666. INTERIEUR D'EGLISE, BRETAGNE

10-  
Interior of a church, with the altar of a chapel lighted from a window at the right; in the foreground is the full-length figure, facing the spectator, of a young woman with black shawl, white lace cap, and pink apron. Two others are kneeling behind her at the altar rail with their backs to the observer.

Signed at lower left, G. BEFANI, and dated 1910

Paris Salon, 1910, No. 140

International Exhibition, Carnegie Institute, Pittsburgh, Pa.

TAPESTRIES

668. AUBUSSON VERDURE TAPESTRY *Early XVIII Century*

275-  
Shows a clearing on a wooded hillside brightened with patches of sunlight, rabbits and birds in the foreground. Woven in shaded greens, blue, and tans; border with garlands of flowers in colors.

*Height, 6 feet; width, 9 feet 6 inches*

669. AUBUSSON VERDURE TAPESTRY *Circa 1700*

175-  
Wooded landscape with autumn-tinted foliage, the foreground animated with pheasants, their plumage touched with scarlet. Border in contrasting color woven with interlaced leaves.

*Height, 6 feet 6 inches; width, 10 feet 11 inches*

[See illustration]



[NUMBER 669]



[NUMBER 670]

670. FLEMISH VERDURE TAPESTRY

*Circa 1710*

*Ho-* View of a park with *château* on the left, densely foliated trees and flowering shrubs in the foreground. Woven in shaded greens and tans, with touches of brighter color; the border with strapwork cartouches, urns, and flowers in the Berain style.

*Height, 9 feet 8 inches; width, 8 feet 1 inch*

[See illustration]

671. FLEMISH VERDURE TAPESTRY Circa 1700  
 Densely wooded glade with cottage in the clearing; birds in foreground. Woven in shaded greens and tans; the border with swags of fruit and flowers, urns, trophies and medallions in Baroque style. *Height, 8 feet 6 inches; width, 7 feet 5 inches*
672. OUDENAARDE VERDURE TAPESTRY Circa 1700  
 A wooded landscape with stream in the foreground and a *château* on a hillside; running border of flowers and leaves. Woven in shaded greens and tans.  
*Height, 8 feet 10 inches; width, 7 feet 5 inches*
673. LILLE VERDURE TAPESTRY PANEL Early XVIII Century  
 A woodland scene with densely foliated trees, slightly autumn tinted; at the left a *château*, in the foreground a bird of heroic size.  
*Height, 7 feet 10 inches; width, 5 feet 7 inches*

### ORIENTAL RUGS

674. PERSIAN SILK RUG  
 Rose pink field, woven with scrolling feathery branches of blossoms and foliage; mazarine blue lotus border. Very fine weave. (*Tokatyan*) *Length, 3 feet 1 inch; width, 3 feet*
675. PERSIAN SILK RUG  
 Deep crimson field, woven with scrolling branches of lotus and other blossoms and leafage; mazarine blue border with undulating floral design. Very fine weave. (*Tokatyan*)  
*Length, 5 feet; width, 3 feet 2 inches*
676. PERSIAN ISPAHAN RUG  
 Closely woven small rug reproducing a sixteenth century floral design on shaded rose ground, the border deep blue.  
*Length, 5 feet 3 inches; width, 4 feet 3 inches*



677. PERSIAN SILK HERATI RUG

80- Sapphire blue field, with the allover rhomboidal Herati design with green and scarlet leaves; apple green border of interlinked Fereghan 'turtle' palmettes. (*Tokatyan*)  
*Length, 5 feet 10 inches; width, 3 feet 8 inches*

678. TWO RUNNERS

80- [A] Guendje runner with mazarine blue field with a pole of cruciform plaquettes and scarlet border. [B] Karadja runner with old gold field and scarlet, ivory, and *tête de nègre* guards.  
*Length, 14 feet 2 inches; width, 3 feet 2 inches*

679. HERIZ SILK RUG

70- Pale turquoise field sustains a palmette medallion of flowers on rose and ivory white. Spandrels with similar motive; three floral borders. *Length, 6 feet 4 inches; width, 4 feet 6 inches*

680. SEHNA KHILIM RUG

*XVIII Century*

40- Rose field with fleurette pattern, superimposed by a large serrated lozenge shaped medallion; three narrow floral borders. Fine tapestry-woven rug; needs a few small repairs.  
*Length, 6 feet 3 inches; width, 3 feet 9 inches*

681. ANTIQUE KAZAK RUG

3/5- Uncommon design of three large serrated lozenges forming a pole medallion, in wine red, green, and ivory on midnight blue field. Three serrated borders.  
*Length, 7 feet 9 inches; width, 4 feet 7 inches*

682. CHINESE RUG WITH YELLOW GROUND

55- Pale yellow field and four borders upon which are scattered sprigs of blossoms, butterflies, and precious objects in two shades of blue and ivory white.  
*Length, 8 feet 2 inches; width, 11 feet*

683. MUMTAZ HAMADAN RUG

150- Deep blue field with symmetrical rows of small medallions and conventionalized blossoms in bright colors. Five borders of undulating vines and similar floral motive.  
*Length, 11 feet 4 inches; width, 9 feet 7 inches*



[NUMBER 684]

## 684. KASHAN SILK CARPET

Rose pink field, richly woven with concentric scalloped medallions in pastel shades of sky blue, celadon, crimson, pistache green and yellow, filled with branches of flowers, vases of blossoms and bird figures; lapis blue border of floral cartouches, alternating with flowering shrubs and enclosed by pale golden yellow floral guards. (*Tokatyan*)

*Length, 12 feet 6 inches; width, 8 feet 2 inches*

[See illustration]



685. TEKKE BOKHARA CARPET

70-  
Brick red field, woven with four chains of octagons parti-colored in orange and ivory, deep blue and crimson; border of latchhooked octagons.

*Length, 11 feet; width, 7 feet 3 inches*

686. TABRIZ RUG

50-  
Rose field with allover design of flowers and lozenges strongly conventionalized, and a centre medallion in deeper color. Floral border on ivory white.

*Length, 11 feet 11 inches; width, 7 feet 7 inches*

687. KIRMAN CARPET

190-  
Woven with concentric cusped medallions in ivory and blue, with rose red spandrels all elaborately enriched with floral arabesques; ivory border of floral cartouches. (*Tokatyan*)

*Length, 11 feet 5 inches; width, 8 feet 4 inches*

688. AGRA RUG

55-  
Closely woven rug, the field with a compact Herati design, the main border with blossoms and scrolled leaves on blue and deep rose.

*Length, 11 feet 9 inches; width, 10 feet 3 inches*

689. PERSIAN CARPET

17-  
Midnight blue field, with the allover Herati diamond trellis bearing orange and scarlet leaves, and blue and tan blossoms; the border with strap-scrollings hung with pendent rosettes. Firm heavy pile. (*Tokatyan*)

*Length, 11 feet 10 inches; width, 8 feet 10 inches*

690. KIRMAN CARPET

185-  
Rose red field, with a pendent stellate medallion and scrolled sapphire blue spandrels all richly overrun with arabesques of floral stems; rose red border with an undulating floral green branch motive. (*Tokatyan*)

*Length, 12 feet; width, 8 feet 10 inches*

## 691. KASHAN RUG

Centre field composed of beautiful concentric medallions filled with flowers and leaves in rose, orange, green, and lapis blue, on deep blue. The main border with similar flowers on ivory white. *Length, 12 feet 6 inches; width, 8 feet 6 inches*

## 692. ANTIQUE SAMARKAND RUG

Field of shaded pale green with strongly conventionalized floral and symbolic motives in rose, mulberry, and other quiet colors. Four borders filled with flower, vine, and fret ornament. *Length, 12 feet 6 inches; width, 6 feet 2 inches*

## 693. CHINESE AMBER CARPET

Beautiful amber yellow field, woven at two opposite corners with trailing branches of bamboo, with spiky blue and green leaves. *Length, 11 feet 8 inches; width, 9 feet*

## 694. TEKKE BOKHARA CARPET

Tawny red field, woven with five chains of octagons part-colored in orange and ivory, crimson and blue; rose red border of latchhooked octagons. *Length, 12 feet 6 inches; width, 7 feet 7 inches*

## 695. KURD KARABAGH CARPET

Midnight blue field, woven with an allover design of leaf-scrolled cartouches with bunches of red and white roses in a powder blue ground; dark red and blue floral border. *Length, 13 feet 2 inches; width, 10 feet*

## 696. BIJUR MINA KILANI CARPET

Scarlet field woven with an allover trellis of green branches bearing Mina Khani rosettes and white jasmine blossoms; blue border of rosettes and 'turtle' figures, with scarlet, blue, and ivory subsidiary borders. *Length, 19 feet; width, 12 feet*

697. MUSTAFI FEREGHAN CARPET

Field of midnight blue sustains a rich design of boldly curved leaves, blossoms and jardinières in bright colors. Five borders of undulating vines on blue and rose.

160-

*Length, 15 feet 7 inches; width, 12 feet 5 inches*

698. FEREGHAN RUG

Characteristic Herati field in rose and green on midnight blue. Plain border with turtle motive on light ground.

200-

*Length, 15 feet 10 inches; width, 6 feet 11 inches*

699. ISPAHAN MESHED CARPET

Field occupied by beautiful concentric medallions filled with flowers and leaves on alternating deep blue, rose, pale green, and lapis blue grounds. Three floral borders on ivory white and deep blue.

180-

*Length, 15 feet 6 inches; width, 13 feet 8 inches*

700. CENTRAL PERSIAN SEHNA CARPET

Midnight blue field, closely woven with the allover Herati lozenge design bearing lotus blossoms and curving leaves, parti-colored in deep red and sky blue; midnight blue floral border, with subsidiary borders of wine red and old gold, and sky blue guards. Fine weave. (*Tokatyan*)

450

*Length, 18 feet; width, 12 feet 3 inches*

[See illustration]

701. MESHED ISPAHAN TREE OF LIFE CARPET

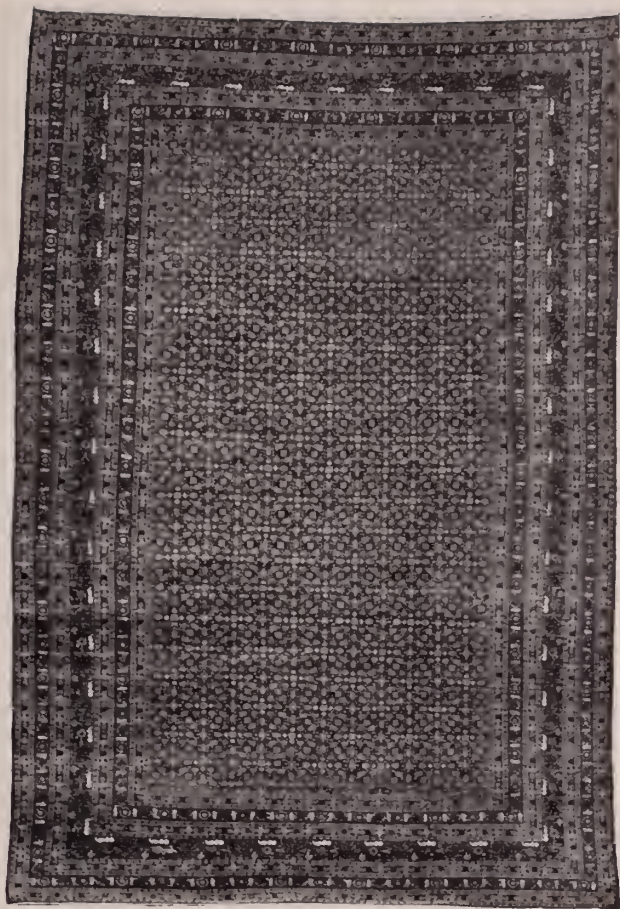
Bright rose field, sustaining a floriated Tree of Life in diverse colors. Six borders of flowers and vines on midnight blue and Nile green. *Length, 16 feet 6 inches; width, 12 feet 5 inches*

250-

702. CHINESE CARPET

Diapered fawn field, woven in shades of blue and rose with fretted medallions, floral sprays, vases and spandrel frets; rose peony border enclosed by blue and white *lei wên*. (*Tokatyan*) *Length, 18 feet; width, 12 feet 9 inches*

325-



[NUMBER 700]

703. CHINESE PEONY CARPET

350- Golden yellow field, with floral centre medallion and corner spandrels and scattered peony flowers; sapphire blue border with *lei wên* and floral vines. (*Private Owner*)

*Length, 17 feet 9 inches; width, 15 feet*

704. INDO-PEREGIAN CARPET

380- Field with allover compact Herati design in rose, green and other harmonious colors. Seven floral borders. Fine weave and design. *Length, 17 feet 9 inches; width, 12 feet 2 inches*

705. SULTANABAD CARPET

225- Bright red field, filled with large blossoms and leaves on boldly curved vines in striking colors, the main border with conventionalized flowers on deep blue. Uncommon type.

*Length, 17 feet 6 inches; width, 12 feet*

706. ANTIQUE KHORASSAN STRIPED CARPET

100- Scarlet field, patterned with seven bands of undulating branches enclosed by ivory guard stripes, within a greenish blue border of infloretted scarlet 'pear' motives. (*Tokatyan*)

*Length, 19 feet 4 inches; width, 7 feet 5 inches*

707. PERSIAN SEREBEND AUDIENCE CARPET

110- Narrow central field of scarlet woven with rows of small 'pear' motives, enclosed by side panels of deep green with diagonal green branches of 'pears'; the head panel in scarlet with a design of rows of small floral shrubs; narrow ivory floral border.

*Length, 21 feet; width, 9 feet 3 inches*

708. PERSIAN SILK MEDALLION RUG

80- Stepped diamond-shaped field of powder blue, with scarlet and ivory floral diamond medallion and spandrels; pale blue floral border with scarlet and pistache green guards. (*Tokatyan*)

*Length, 5 feet 6 inches; width, 4 feet 5 inches*



## 709. KURDISTAN RUNNER

Centre field filled with conventionalized blossoms in symmetrical rows. Three floral borders on rose and yellow.

*Length, 9 feet 10 inches; width, 3 feet 8 inches*

## 710. EARLY AMERICAN HOOKED RUG

Depicting a country homestead surrounded with a wreath of blossoms and leaves, in pastel colors.

*Length, 3 feet 10 inches; width, 2 feet 2 inches*

## 711. TWO EARLY AMERICAN HOOKED RUGS

[A] Roses and bleeding hearts surrounding the word *Mother*, in bright colors. [B] Worked with large mulberry red leaves centring a sprig of flowers on a buff ground. Different sizes. [Lot.]

## 712. SIX EARLY AMERICAN HOOKED MATS

Various floral patterns on light and dark grounds. Various sizes. [Lot.]

[END OF SALE]

*Grand Total \$ 28,635=*





APPRAISALS  
FOR UNITED STATES AND STATE TAX  
INSURANCE AND OTHER PURPOSES  
CATALOGUES OF PRIVATE COLLECTIONS



*A*PPRAISALS. The American Art Association - Anderson Galleries, Inc., will furnish appraisals, made by experts under its direct supervision, of art and literary property, jewelry and all personal effects, in the settlement of estates, for inheritance tax, insurance and other purposes.

CATALOGUES. The Company is prepared to supplement this appraisal work by making catalogues of private libraries, of the contents of homes or of entire estates, such catalogues to be modeled after the fine and intelligently produced Sales catalogues of the Company.

Upon request the Company will furnish the names of many Trust and Insurance Companies, Executors, Administrators, Trustees, Attorneys and private individuals for whom the Company has made appraisals which not only have been entirely satisfactory to them, but have been accepted by the United States Estate Tax Bureau, the State Tax Commission and others in interest.

AMERICAN ART ASSOCIATION  
ANDERSON GALLERIES, INC.

30 EAST 57TH STREET  
NEW YORK CITY

*Telephone:* PLAZA 3-1269

Composition and Presswork  
by



PUBLISHERS PRINTING COMPANY  
*William Bradford Press*

Half-tone Plates by  
POWERS PHOTO ENGRAVING CO.  
New York











THE METROPOLITAN  
MUSEUM OF ART

*Thomas J. Watson Library*

